

Of course
23-2-76.

SERVICE PARTS CATALOG

MODEL 31 CROP SHREDDER

MODEL 33 CROP CHOPPER

MODEL 36 CROP CHOPPER

ISSUE 11-75

REPLACES ALL PREVIOUS ISSUES

Key N° 215

496604

SPERRY  NEW HOLLAND

GENERAL INFORMATION

1. Whenever the terms left or right are used, it should be understood to mean from a position facing in direction of travel.
2. Throughout this manual you find common hardware, not illustrated, but listed in the description column. The service part immediately preceding a hardware listing is the part using these particular items for mounting purposes. This hardware is not included with the service part or assembly, when ordered as a replacement.
3. Sperry New Holland, a Division of Sperry Rand Corporation is continually striving to improve its products. We must, therefore, reserve the right to make improvements or changes, when it becomes practical and possible to do so, without incurring any obligation to make changes, or additions, to the equipment sold previously.

ORDERING PARTS

1. Please submit orders on the standard Dealer Order Form and mail to your Branch Office. The form should be completely filled in and any special routing so indicated. Telephone orders, being less accurate, should be limited to "emergency situations."
2. It is requested that parts be listed in numerical sequence, using the current Sperry New Holland part numbers. It is advisable to consult the Service Parts Price List for part number supersession, package quantity and other pertinent information.

ALWAYS USE GENUINE SPERRY NEW HOLLAND PARTS

CONTENTS

GROUP	PAGE NUMBER
AUGER GROUP	38, 39
AUGER HOUSING GROUP	32 33 34, 35
AXLE	4, 5, 6
AXLE SUPPORT GROUP	8 9
CHAIN, AUGER DRIVE, FRONT	36, 37
CHAIN, AUGER DRIVE, REAR	38, 39
CLUTCH AND DRIVE SHEAVE GROUP (FOR MODEL 31)	16, 17
CLUTCH AND DRIVE SHEAVE GROUP (FOR MODEL 33 BSN)	18, 19
CLUTCH AND DRIVE SHEAVE GROUP (FOR MODEL 33 ASN AND MODEL 36)	20, 21, 22
CUTTER HEAD HOUSING GROUP	26, 27
DECAL SET	6
DISCHARGE SPOUT	28, 29
FLAIL	36 37
FLYWHEEL	24, 25
GEARBOX	14 15
HITCH	4, 5, 6
JACK (OLD STYLE)	4, 5 6
JACK (NEW STYLE)	7
KNIFE	24, 25
LIFT ARM GROUP	10 11
PADDLE	24, 25
P.T.O. GROUP	12, 13
QUADRANT	28, 29
ROTOR	36 37
ROTOR HOUSING	32, 33, 34, 35
SHOE	32, 33, 34, 35
SLIP CLUTCH	20, 21, 22
SMV EMBLEM	8, 9
SPOUT GROUP	28, 29
TONGUE	4 5, 6
TONGUE SUPPORT GROUP	8, 9
V-BELT (MODEL 31)	16, 17
V-BELT (MODEL 33 BSN)	18 19
V-BELT (MODEL 33 ASN AND MODEL 36)	20, 21, 22
WHEEL	4, 5, 6

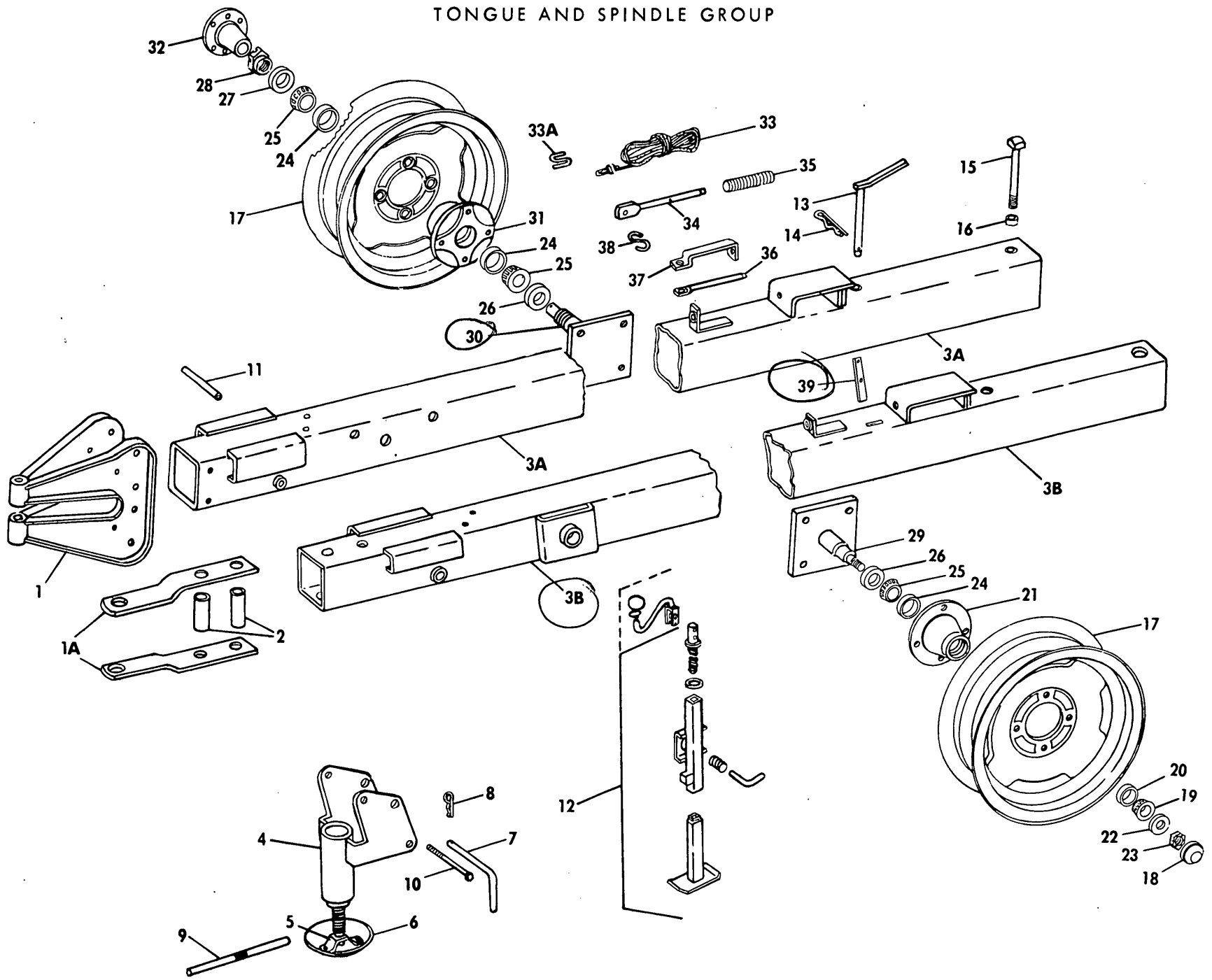
ATTACHMENTS

ADJUSTABLE AXLE HEIGHT KIT	44
*ADJUSTABLE SPOUT BUNDLE	30, 31
AUTOMATIC HITCH	43
AXLE EXTENSION KIT, R.H.	44
AXLE EXTENSION KIT, L.H.	44
DEFLECTOR KIT	42
HYDRAULIC LIFT BUNDLE	41
PUSH BAR KIT	40
*SAFETY SHIELD KIT	42
SHORT FLAIL KIT	41
SIX KNIFE FLYWHEEL CONVERSION KIT	40
SPOUT EXTENSION BUNDLE	40

* THESE ATTACHMENTS ARE NOW STANDARD EQUIPMENT

MODEL 31 CROP SHREDDER
MODEL 33 AND 36 CROP CHOPPER
TONGUE AND SPINDLE GROUP

4



MODEL 31 CROP SHREDDER
MODEL 33 AND 36 CROP CHOPPER
TONGUE AND SPINDLE GROUP

Ref. No.	Part No.	No. Used	Description
1	+126323	1	Hitch Weld Assembly
1A	++134837	2	Hitch 2 88264 Cap Screw, Hex Head, Grade 5, 5/8" x 6" 2 84057 Lockwasher, 5/8" 2 84947 Hex Nut, 5/8"
2	++ 36464	2	Spacer
3	* 46952	1	Tongue Weld Assembly (Not Shown)
3A	** 63643	1	Tongue Weld Assembly
3B	***130362	1	Tongue Weld Assembly
	+++166945	1	Tongue Weld Assembly
	¶¶265059	1	Tongue Weld Assembly
4	§ 42385	1	Jack Weld Assembly, Includes Base 1 87414 Lube Fitting, 1/4-28
5	§ 45950	1	Jack Base Clamp 2 84909 Machine Screw, Truss Head, 1/4" x 3/4" 2 80682 Lockwasher, 1/4" 2 84942 Hex Nut, 1/4"
6	§70841	1	Jack Base Kit (Includes Ref. 5 and Hardware)
7	§§42384	1	Jack Pin
8	§37851	1	Hairpin Cotter
9	§33306	1	Screw Handle
10	§88553	1	Cap Screw, Hex Head, Grade 5, 1/2" x 6" 1 80679 Lockwasher, 1/2" 1 84946 Hex Nut, 1/2"
11	§42352	1	Spacer
12	§§128437	1	Jack Assembly (See Page 7 for Breakdown) 1 88395 Spring Pin, 5/16" x 3"
13	122406	1	Tongue Pivot Pin Weld Assembly
14	33778	1	Hairpin Cotter
15	72871	1	Tongue Bolt 2 87381 Washer, 3/4" 1 84995 Slotted Hex Nut, 3/4" 1 80708 Cotter Pin, 1/8" x 1 1/2"
16	46774	1	Spacer
17	39538	2	Disc Wheel, for 5.00-15 Tire
	217229	2	Disc Wheel, for 25 x 7.50 - 15 Tire 8 32383 Wheel Bolt 2 196033 Tubeless Tire Valve
17A	39550	2	Tire, Rib Tread (Code 1-1) 4 Ply, 5.00 - 15 (Purchase Locally)
	216110	2	Tire, Terra Rib Tread, 4 Ply, 25 x 7.50 - 15 (Purchase Locally)
17B	39551	2	Inner Tube, 5.00 x 15 (Purchase Locally)
18	249130	1	Hub Cap ---Replaces 26808
19	36724	1	Bearing Cone
20	36725	1	Bearing Cup
21	132158	1	Wheel Hub
22	87381	1	Washer 3/4"
23	88886	1	Slotted Hex Nut, 3/4" UNF 1 87398 Cotter Pin 3/16" x 1 1/4"
24	36723	3	Bearing Cup
25	36726	3	Bearing Cone
26	36727	2	Seal
27	46876	1	Oil Seal
28	50256	1	Slotted Hex Nut 1 87400 Cotter Pin, 3/16" x 2"

§ Used with 63643 and 46952 Tongues

§§ Used with 130362, 166945 and
265059 Tongues

CONTINUE

MODEL 31 CROP SHREDDER
MODEL 33 AND 36 CROP CHOPPER
TONGUE AND SPINDLE GROUP

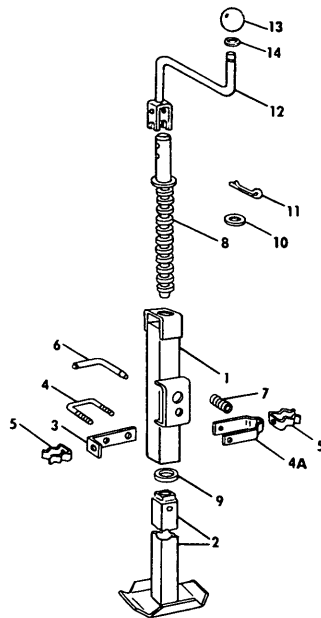
Ref. No.	Part No.	No. Used	Description
29	† 46681	1	Spindle Weld Assembly L.H.
	†† 285294	1	Spindle Weld Assembly, L.H. 4 88551 Cap Screw, Hex Head, Grade 5, 1/2" x 1 3/4" 4 80679 Lockwasher, 1/2" 4 84946 Hex Nut, 1/2"
30	† 134835	1	Spindle Weld Assembly, R.H.
	†† 285148	1	Spindle Weld Assembly, R.H. 4 88551 Cap Screw, Hex Head, Grade 5, 1/2" x 1 3/4" 4 80679 Lockwasher, 1/2" 4 84946 Hex Nut, 1/2"
31	46871	1	Wheel Hub
32	134489	1	Spindle Support 1 80710 Lube Fitting, 1/8 NPT 6 88206 Cap Screw, Hex Head, Grade 5, 3/8" x 1" 6 80680 Lockwasher, 3/8" 6 84944 Hex Nut, 3/8" 1 80752 Cotter Pin, 1/4" x 2 1/2"
33	49956	1	Rope Assembly
33A	115680	1	"S" Hook
34	+ 59911	1	Latch Pin
35	26392	1	Spring
36	++ 165166	1	Latch Pin
37	++ 169666	1	Bracket
38	++ 34455	1	"S" Hook
39	†† 126162	1	Lever 1 88011 Cap Screw, Hex Head, Grade 5, 3/8" x 1 1/4" 1 87016 Washer, 3/8" 1 88902 Locknut, 3/8"

- * Used on or below Serial No. 5791 on Model 33.
- ** Used on all Model 31; used between Serial Nos. 5792 and 13001 on Model 33; used on or below Serial No. 5099 on Model 36
- *** Used between Serial Nos. 13001 and 18890 on Model 33; used between Serial Nos. 5100 and 20300 on Model 36.
- + Used on all Model 31; used on or below Serial No. 18890 on Model 33; used on or below Serial No. 20300 on Model 36.
- ++ Used on or above Serial No. 18891 on Model 33; used on or above Serial No. 20301 on Model 36.
- +++ Used between Serial No's. 18891 and 233594 on Model 33; used between Serial No's. 20301 and 254349 on Model 36.
- † Used on all Model 31; used on or below Serial No. 233594 on Model 33; used on or below Serial No. 254349 on Model 36.
- †† Used on or above Serial No. 233595 on Model 33; used on or above Serial No. 254350 on Model 36.

MODEL 31 CROP SHREDDER
MODEL 33 AND 36 CROP CHOPPER
DECAL SET

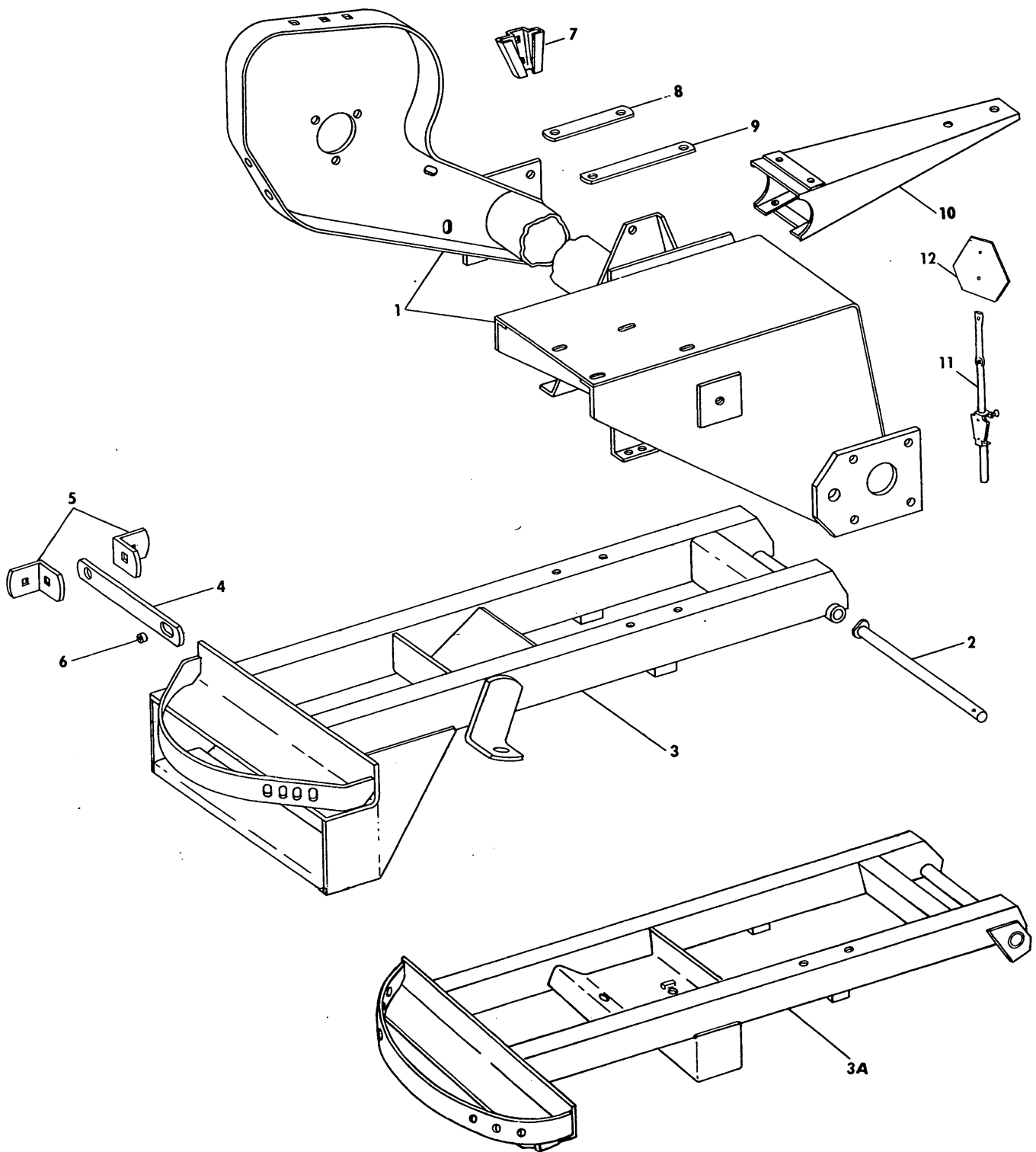
Part No.	No. Used			Description
	31	33	36	
52412	1			Decal Set
47498		1		Decal Set
56382			1	Decal Set

MODEL 33 AND 36 CROP CHOPPER
JACK ASSEMBLY



Ref. No.	Part No.	No. Used	Description
	128437	1	Jack Assembly (Includes Ref. 1 thru 11)
1	122483	1	Jack Weld Assembly
			1 87414 Lube Fitting, 1/4-28
2	169700	1	Jack Tube Weld Assembly, Inside
3	217392	1	Bracket ---Replaces 163901
4	217391	1	"U" Bolt
			2 84060 Locknut, 1/4"
4A			Bracket replaced by 1 each of Ref. 3 and 4)
5	163902	1	Spring Clip
			1 88542 Cap Screw, Hex Head, 1/4" x 1/2"
			1 84922 Speed Nut, 1/4"
6	128375	1	Jack Pin
			1 87455 Spring Pin, 1/8" x 1"
7	26538	1	Spring
8	218784	1	Jack Screw Weld Assembly ---Replaces 169575
			1 87406 Roll Pin, 1/4" x 1 1/2"
9	50600	1	Thrust Washer
10	84239	1	Washer, 3/4"
11	87398	1	Cotter Pin, 3/16" x 1 1/4"
12	169702	1	Crank Weld Assembly
			1 88436 Cap Screw, Hex Head, 3/8" x 2"
			2 80702 Washer, 3/8"
			1 84040 Locknut, 3/8"
13	129344	1	Knob
14	129345	1	Retaining Ring

MODEL 31 CROP SHREDDER
MODEL 33 AND 36 CROP CHOPPER
AXLE AND TONGUE SUPPORT GROUP



MODEL 31 CROP SHREDDER
MODEL 33 AND 36 CROP CHOPPER
AXLE AND TONGUE SUPPORT GROUP

Ref. No.	Part No.	No. Used			Description
		31	33	36	
1	46984	1	1		Axle Frame Weld Assembly
	50685			1	Axle Frame Weld Assembly
2	46689	1	1	1	Lift Frame Shaft Weld Assembly
					1 87577 Roll Pin, 3/8" x 2"
3	46949		*1		Tongue Support Frame Weld Assembly
	+ 58109	1	**1		Tongue Support Frame Weld Assembly
3A	134464		***1	1	Tongue Support Frame Weld Assembly
4	46680	1	1		Bracket
					1 88783 Carriage Bolt, 1/2" x 1 1/2"
					1 87689 Cap Screw, Hex Head, 1/2" x 1 1/2"
					1 87364 Plain Washer, 1/2"
					2 80679 Lockwasher, 1/2"
					2 84946 Hex Nut, 1/2"
	56211			1	Bracket
					1 88783 Carriage Bolt, 1/2" x 1 1/2"
					1 87689 Cap Screw, Hex Head, 1/2" x 1 1/2"
					1 87364 Plain Washer, 1/2"
					2 80679 Lockwasher, 1/2"
					2 84946 Hex Nut, 1/2"
5	46679	2	2	2	Bracket
					2 87545 Carriage Bolt, 1/2" x 1"
					2 80679 Lockwasher, 1/2"
					2 84946 Hex Nut, 1/2"
6	46678	2	2	2	Spacer
7	38027	1	1	1	Bracket
					2 84826 Carriage Bolt, 5/16" x 3/4"
					2 80681 Lockwasher, 5/16"
					2 84943 Hex Nut, 5/16"
8	46686	AR	AR	AR	Shim, .003"
	49065	AR	AR	AR	Shim, .015"
	49066	AR	AR	AR	Shim, .036"
	46778	AR	AR	AR	Shim, .060"
9	46684	AR	AR	AR	Shim, .003"
	49063	AR	AR	AR	Shim, .015"
	49064	AR	AR	AR	Shim, .036"
	46779	AR	AR	AR	Shim, .060"
10	47036		1	1	Wagon Hitch Weld Assembly
					5 87670 Cap Screw, Hex Head, Grade 5, 1/2" x 1 1/4"
					5 80679 Lockwasher, 1/2"
					5 84946 Hex Nut, 1/2"
11	195036	1	1	1	SMV Pole Mount Assembly
12	189759	1	1	1	SMV Emblem
					2 84461 Machine Screw, Truss Head, #10-24 x 5/8"

AR - As Required

*Used on and below Serial No. 5791

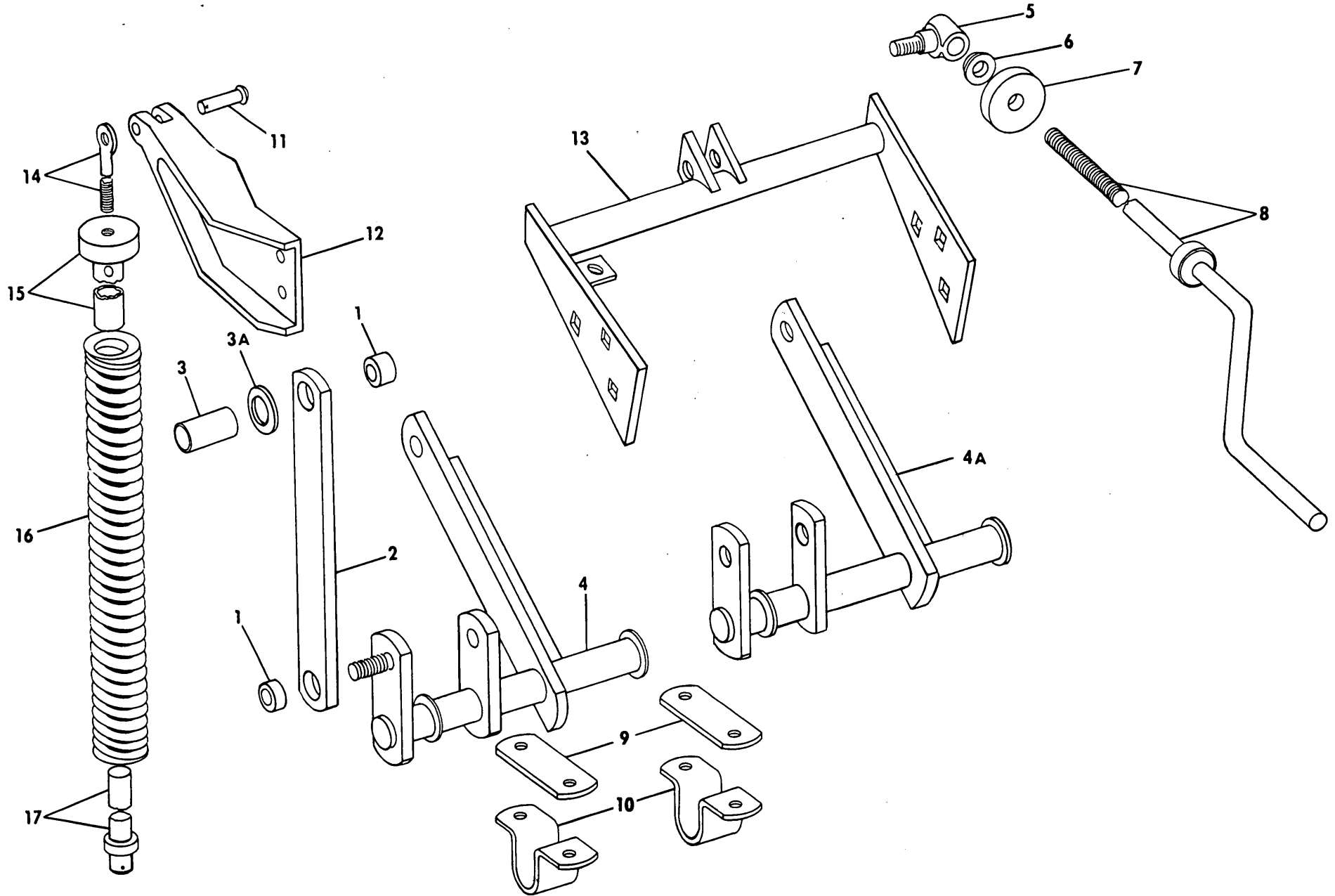
**Used from Serial No. 5792 up to and including Serial No. 10591

***Used on and above Serial No. 10592

+58109 Support Frame is no longer available. It can be replaced by using 1 each of 134464 Support Frame, 63553 Bracket, 63556 Spacer and 65918 Lift Arm.

MODEL 31 CROP SHREDDER
MODEL 33 AND 36 CROP CHOPPER
LIFT ARM GROUP

10



MODEL 31 CROP SHREDDER
MODEL 33 AND 36 CROP CHOPPER
LIFT ARM GROUP

Ref. No.	Part No.	No. Used			Description
		31	33	36	
1	115040	2	2	2	Bushing
2	46695	1	1	1	Lift Arm 1 87403 Cap Screw, Hex Head, 3/4" x 2 1/4" 1 87381 Plain Washer, 3/4" 1 87340 Lockwasher, 3/4" 1 84948 Hex Nut, 3/4"
3	63556		*1	1	Split Spacer 1 88421 Cap Screw, Hex Head, 3/4" x 5" 1 87340 Lockwasher, 3/4" 1 84948 Hex Nut, 3/4"
3A	87381		*1	1	Plain Washer, 3/4"
4	46699	1	**1		Lift Arm Weld Assembly 1 87381 Plain Washer, 3/4" 1 87340 Lockwasher, 3/4" 1 84948 Hex Nut, 3/4"
4A	65918		*1	1	Lift Arm Weld Assembly 1 87211 Cap Screw, Hex Head, 3/4" x 1 1/2" 1 87340 Lockwasher, 3/4"
5	46724	1	1	1	Adjustment Nut 1 87365 Plain Washer, 5/8" 1 84057 Lockwasher, 5/8" 1 84947 Hex Nut, 5/8"
6	46657	1	1	1	Tapered Collar
7	46658	1	1	1	Bearing
8	46765	1	1	1	Crank Weld Assembly 1 84924 Roll Pin, 5/32" x 1 1/4"
9	46687	2	2	2	Bearing Plate
10	46688	2	2	2	Lift Arm Bearing 4 87996 Cap Screw, Hex Head, 1/2" x 4 1/2" AR 87364 Plain Washer, 1/2" 4 80679 Lockwasher, 1/2" 4 84946 Hex Nut, 1/2" 1 87415 Lube Fitting, 1/4", 90°
11	25464	1	1	1	Drilled Rivet 2 87364 Plain Washer, 1/2" 1 87397 Cotter Pin, 3/16" x 1"
12	46747	1	**1		Lift Spring Support Bracket 3 87670 Cap Screw, Hex Head, 1/2" x 1 1/4" 3 80679 Lockwasher, 1/2" 3 84946 Hex Nut, 1/2"
13	63553		*1	1	Tube Weld Assembly 6 88018 Machine Bolt, Round Head, Short Square Neck, 1/2" x 1" 6 80679 Lockwasher, 1/2" 6 84946 Hex Nut, 1/2"
14	36658	1	1	1	Lift Spring Adjustment Rod 1 87128 Roll Pin, 1/8" x 5/8"
15	46670	1	1	1	Lift Spring Outer Shaft Weld Assembly
16	49943	1			Lift Spring
	46830		1		Lift Spring
	56235			1	Lift Spring
17	46675	1	1	1	Lift Arm Weld Assembly 1 80754 Cotter Pin, 3/16" x 1 1/2"

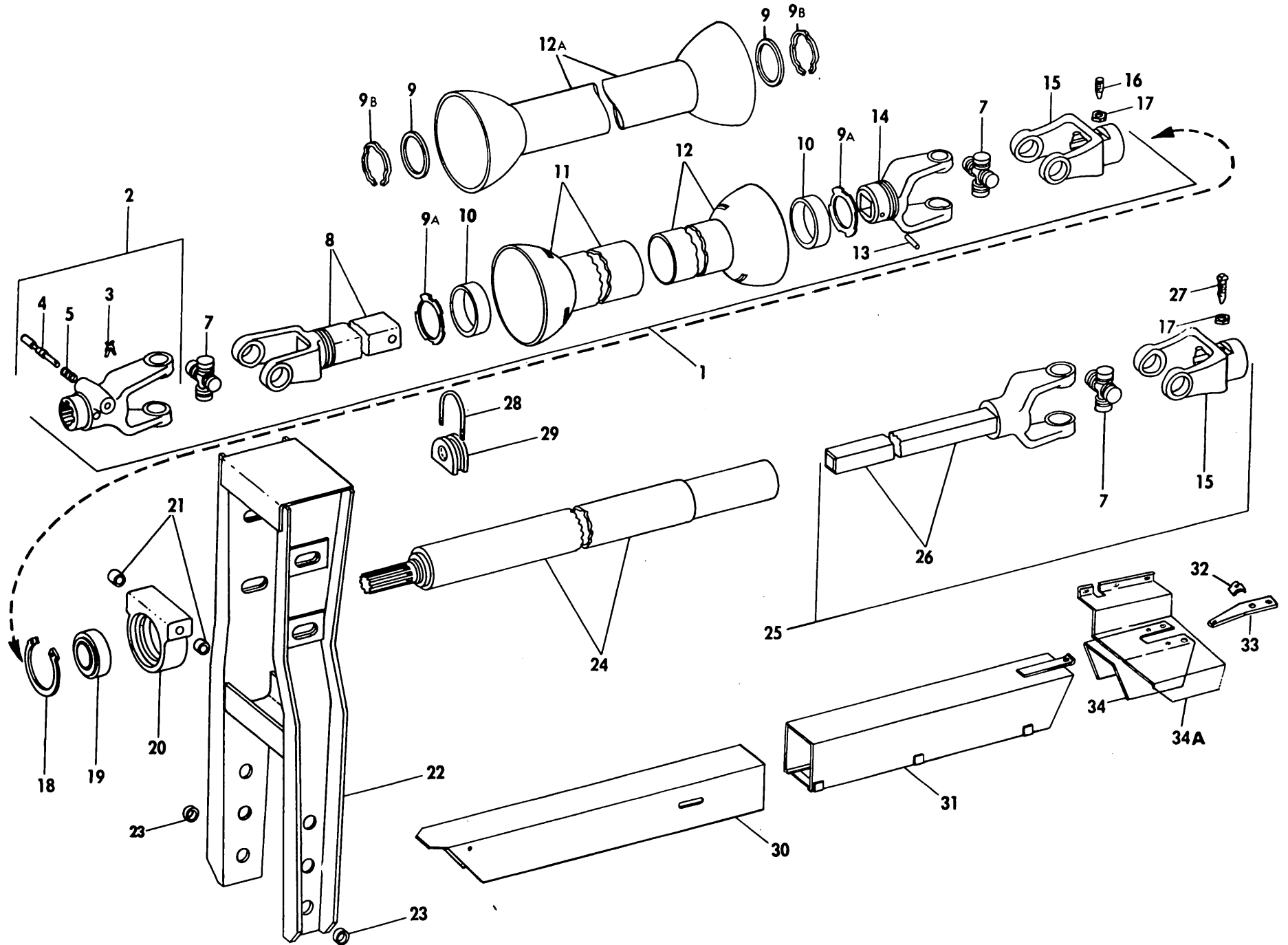
* Used on and above Serial No. 10592 on the Model 33.

** Used on and below Serial No. 10591 on the Model 33.

AR - As Required

MODEL 31 CROP SHREDDER
MODELS 33 AND 36 CROP CHOPPER
P.T.O. GROUP

12



MODEL 31 CROP SHREDDER
MODEL 33 AND 36 CROP CHOPPER
P.T.O. GROUP

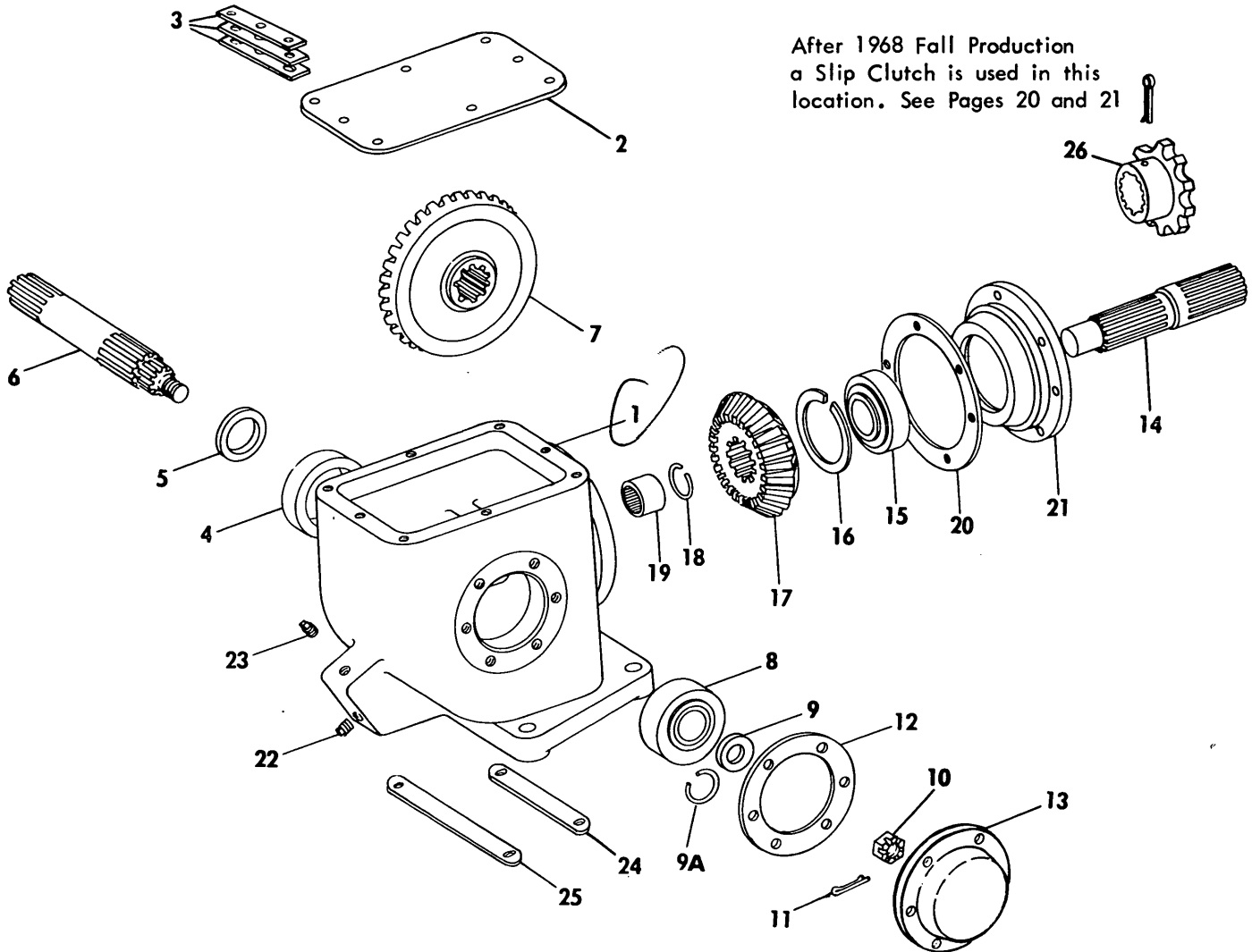
Ref. No.	Part No.	No. Used	Description
1	175483	1	P.T.O. Assembly, Front
2	34780	1	Quick Detachable Yoke Assembly
3	40305	1	"X" Washer
4	236068	1	Yoke Pin ---Replaces 40314
5	26981	1	Yoke Spring
7	29214	3	Spider and Bearing Assembly
8	175487	1	Yoke and Shaft Assembly
9	* 56801	2	Thrust Washer
9A	** 56801	2	Thrust Washer --- Replaces 41503
9B	* 56760	2	Snap Ring
10	47941	2	Nylon Bearing
11	***175482	1	Bell and Outer Shield Assembly w/Snap Ring #56760
12	***175480	1	Bell and Inner Shield Assembly w/Snap Ring #56760
12A	***198219	1	Shield, One Piece
13	81825	1	Groove Pin, Type A, 3/8" x 2"
14	175485	1	Yoke
15	29212	2	Yoke
16	34418	1	Special Set Screw
17	87309	2	Hex Jam Nut, 1/2", N.F.
18	29852	1	Retaining Ring
19	47192	1	Bearing
20	44322	1	Bearing Housing 2 88551 Cap Screw, Hex Head, 1/2" x 1 3/4" 2 80700 Plain Washer, 1/2" 2 80679 Lockwasher, 1/2"
21	36436	2	Spacer
22	36425	1	P.T.O. Bearing Support Weld Assembly 1 88554 Cap Screw, Hex Head, 1/2" x 7 1/2" 2 80700 Plain Washer, 1/2" 1 80679 Lockwasher, 1/2" 1 84946 Hex Nut, 1/2"
23	25936	2	Spacer
24	46655	1	P.T.O. Drive Slip Joint Tube Assembly 1 87408 Lube Fitting, 1/4", Straight
25	46661	1	P.T.O. Drive Slip Joint Shaft Assembly
26	46751	1	Yoke and Shaft Assembly
27	37251	1	Special Set Screw
28	28114	1	"U" Bolt 2 80684 Lockwasher, #10 2 87304 Hex Nut, #10
29	28110	1	Twine Guide
30	46669	1	Guard, Front
31	46663	1	Guard, Rear
32	48206	1	Spring 1 87868 Carriage Bolt, 1/2" x 1 1/4" 1 88871 Locknut, 1/2"
33	46685	1	Guard Support 2 87872 Cap Screw, Hex Head, 5/16" x 3/4" 2 80681 Lockwasher, 5/16"
34	48207	1	Shield (Used with Connector Sprocket)
34A	285315	1	Shield (Used with Slip Clutch) ---Replaces 166377 3 87639 Bolt, Round Head, Short Square Neck, 5/16" x 3/4" 3 80681 Lockwasher, 5/16" 3 84943 Hex Nut, 5/16"

* Used on or above Serial No. 36920 on Model 33, 116001 on 36

** Used on or below Serial No. 36919 on Model 33, 116000 on 36

*** Use caution when ordering, Shielding has been changed from 2 piece Inner and Outer Shields to single 1 piece Shield.

MODEL 31 CROP SHREDDER
 MODELS 33 AND 36 CROP CHOPPERS
 GEARBOX ASSEMBLY



After 1968 Fall Production
 a Slip Clutch is used in this
 location. See Pages 20 and 21

Ref. No.	Part No.	No. Used	Description
	* 46923	1	Gearbox Assembly (Includes Ref. 1 thru 23 except 1A 6A, 7A, 9, 17A)
	**181110	1	Gearbox Assembly (Includes Ref. 1 thru 23 except 1A 6. 7 9A 17) ---Replaces 56329
	***285300	1	Gearbox Assembly (Includes Ref. 1 thru 23 except 1, 6, 7, 9A, 17)
			4 84250 Bolt, Round Head, Short Square Neck 1/2" x 2"
			4 80679 Lockwasher, 1/2"
			4 84946 Hex Nut, 1/2"
1	46782	1	Housing (For 46923 or 181110 Gearbox)
1A	285267	1	Housing (For 285300 Gearbox)
			1 280250 Cotter Pin, 3/32" x 3/4"
2	46803	1	Cover
			5 87872 Cap Screw, Hex Head, 5/16" x 3/4"
			5 80681 Lockwasher, 5/16"
3	166376	3	Shim
			3 87657 Cap Screw, Hex Head, 5/16" x 1 1/4"
			3 80681 Lockwasher, 5/16"
4	46807	1	Needle Bearing
5	46886	1	Oil Seal
6	* 46792	1	Input Shaft See Note "A"

MODEL 31 CROP SHREDDER
 MODELS 33 AND 36 CROP CHOPPERS
 GEARBOX ASSEMBLY (CONTINUED)

Ref. No.	Part No.	No. Used	Description
6A	+179908	1	Input Shaft
7	* 46842	1	Bevel Gear
7A	+ 56323	1	Bevel Gear
8	46805	1	Ball Bearing
9	+141781	1	Special Washer (Used with 179908 Input Shaft)
9A	* 46808	1	Retaining Ring (Used with 46792 Input Shaft)
10	88886	1	Slotted Hex Nut, 3/4-16 ---Replaces 84996
11	80754	1	Cotter Pin, 3/16" x 1 1/2"
12	46922	1	Gasket
13	179914	1	Bearing Cap ---Replaces 46721 6 88543 Cap Screw, Hex Head, 5/16" x 1" 6 80681 Lockwasher, 5/16"
14	46732	1	Output Shaft
15	47192	1	Ball Bearing
16	46809	1	Retaining Ring
17	* 46843	1	Bevel Pinion, 23 Teeth
17A	+ 56324	1	Bevel Pinion, 19 Teeth
18	46810	1	Retaining Ring
19	37326	1	Needle Bearing
20	46932	AR	Shim, .003" Thick
	46790	AR	Shim, .005" Thick
	46933	AR	Shim .007" Thick
21	46722	1	Bearing Mount 6 88543 Cap Screw, Hex Head, 5/16" x 1" 6 80681 Lockwasher, 5/16"
22	80709	1	Pipe Plug, Square Head, 1/8"
23	80781	1	Pipe Plug, Square Head, 3/8"
24	46686	AR	Shim, 6" Long, .003" Thick
	49065	AR	Shim, 6" Long, .015" Thick
	49066	AR	Shim, 6" Long .036" Thick
	46778	AR	Shim, 6" Long, .060" Thick
25	46684	AR	Shim, 7 1/2" Long .003" Thick
	49063	AR	Shim, 7 1/2" Long, .015" Thick
	49064	AR	Shim, 7 1/2" Long, .036" Thick
	46779	AR	Shim, 7 1/2" Long, .060" Thick
26	++ 46730	1	Connector Sprocket
	+++ 56496	1	Connector Sprocket 1 84141 Cotter Pin, 5/16" x 2 1/2"

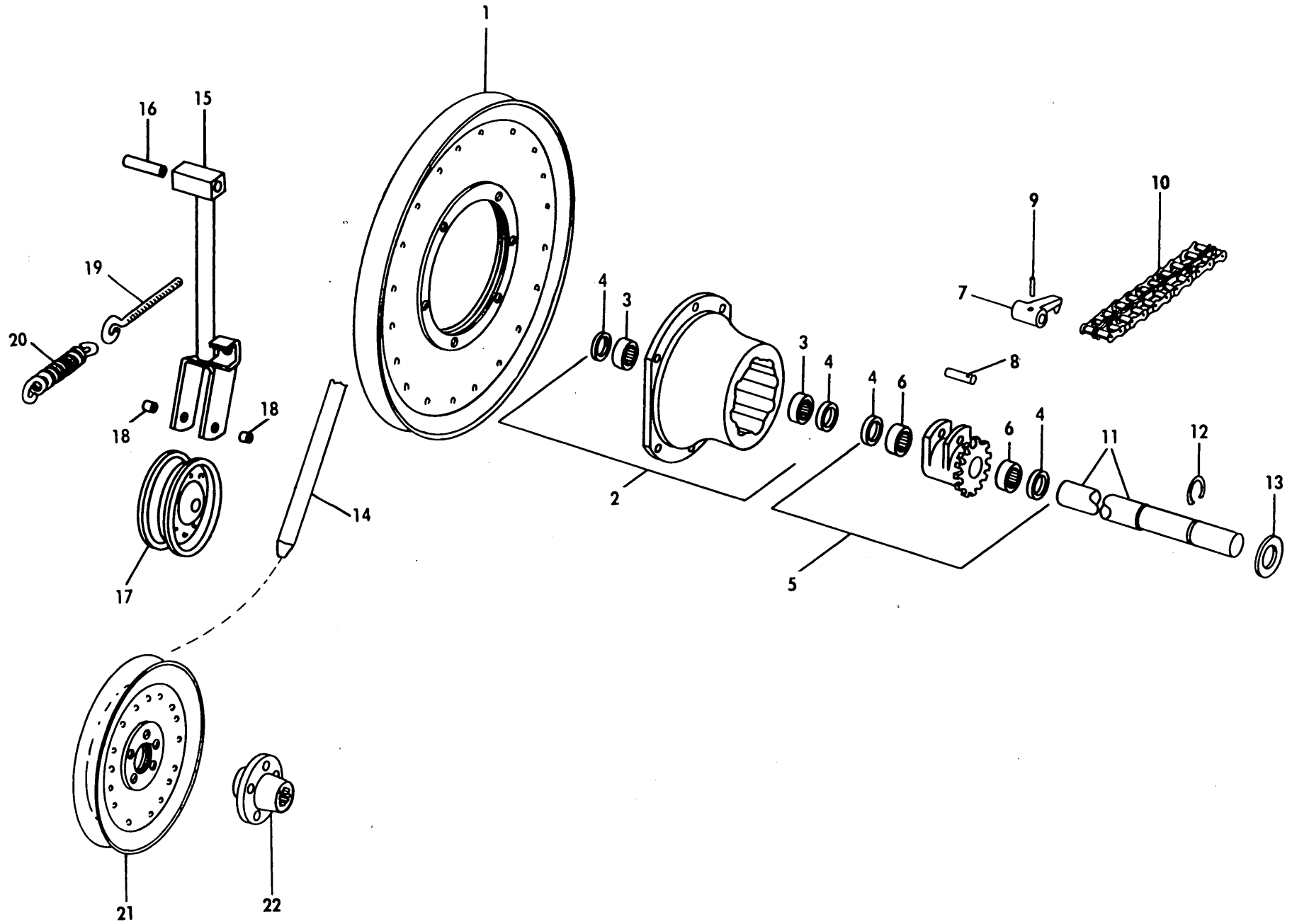
AR - As Required

- * Used on all Model 31
- * Used on or below Serial No. 11063 on Model 33
- ** Used on and between Serial No's. 11063 and 233594 on Model 33
- ** Used on or below Serial No. 254349 on Model 36
- *** Used on or above Serial No. 233595 on Model 33
- *** Used on or above Serial No. 254350 on Model 36
- + Used on or above Serial No. 11064 on Model 33
- + Used on all Model 36
- ++ Used on or below Serial No. 1120 on Model 31
- ++ Used on or below Serial No. 9990 on Model 33
- +++ Used on or above Serial No. 1121 on Model 31
- +++ Used on or above Serial No. 9991 on Model 33

NOTE "A": 46792 Input Shaft is no longer available. It can be replaced by using 1 each of 179908 Shaft, 179914 Bearing Cap, 141781 Washer and 88886 Nut.

MODEL 31 CROP SHREDDER
CLUTCH, DRIVE SHEAVE AND IDLER GROUP

16

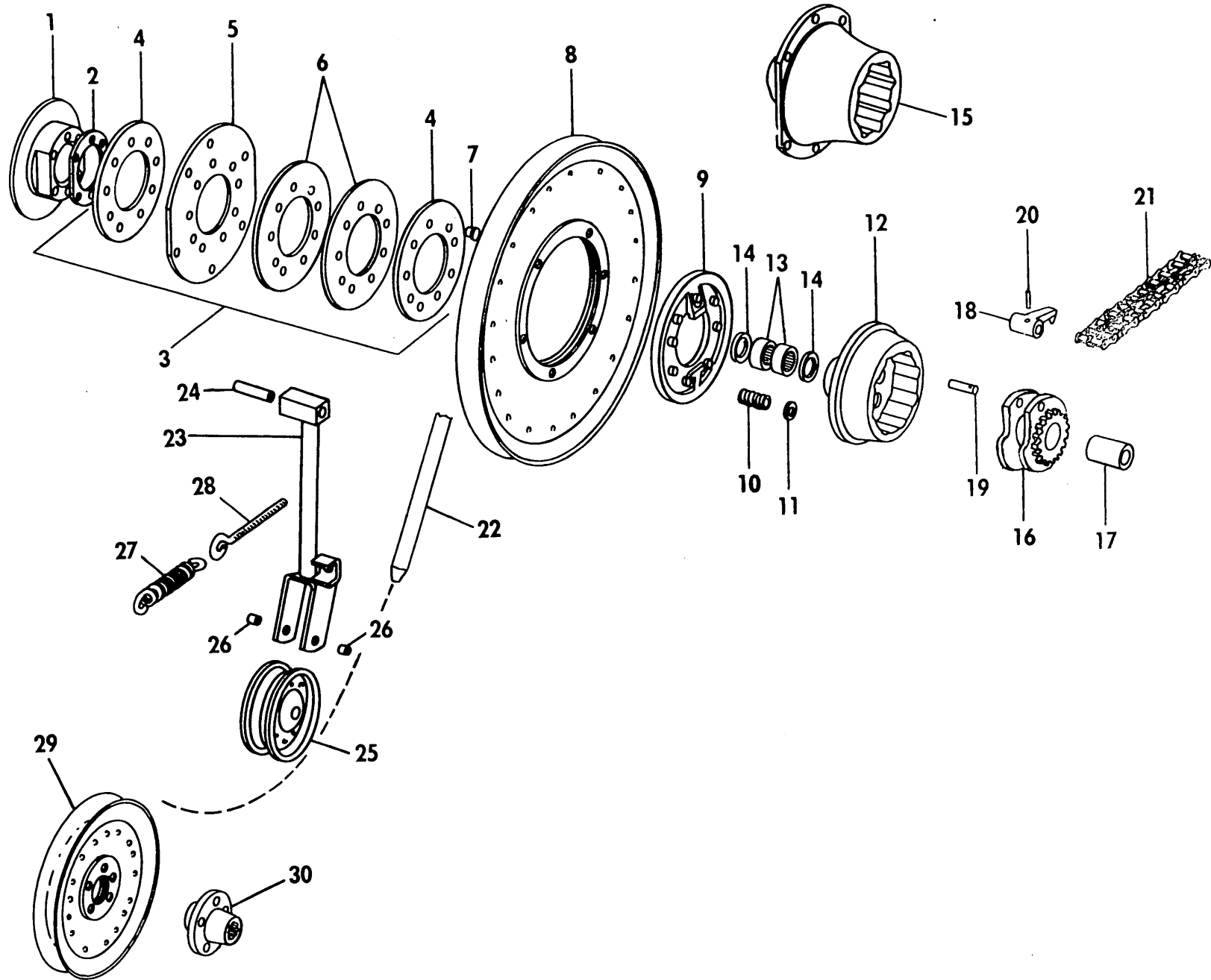


MODEL 31 CROP SHREDDER
CLUTCH, DRIVE SHEAVE AND IDLER GROUP

Ref. No.	Part No.	No. Used	Description
1	*245087	1	Sheave Weld Assembly ---Replaces 46856, 224839
	** 56389	1	Sheave Rivet Assembly 6 87872 Cap Screw, Hex Head, 5/16" x 3/4" 6 80681 Lockwasher, 5/16"
2	63048	1	Clutch Housing (Includes 2 of Ref. 3)
3	38233	2	Roller Bearing, 1 1/4" Wide
4	46886	4	Seal
5	49934	1	Sprocket, Bearing and Seal Assembly (Includes Ref Nos. 4 and 6) 1 80720 Lube Fitting, 1/8 P.T.-30°
6	49963	2	Roller Bearing, 3/4" Wide
7	218527	1	Clutch Dog ---Replaces 46787
8	46789	1	Pin
9	87455	1	Roll Pin, 1/8" x 1"
10	**56501	1	Chain Coupling Assembly 1 59741 Coupler Link, #RC 6014 AR Not Serviced Roller Link, #RC 6014
	*46791	1	Double Roller Chain Assembly 1 45217 Double Coupler Link AR Not Serviced Regular Link
11	49932	1	Clutch Shaft
12	46810	1	Retaining Ring
13	36276	2	Washer
14	*46914	1	V-Belt
	**64218	1	V-Belt (Super Construction)
15	58131	1	Idler Pivot Weld Assembly 1 88043 Cap Screw, Hex Head, 1/2" x 3 1/4" 1 87364 Washer, 1/2" 1 80679 Lockwasher, 1/2" 1 84946 Hex Nut, 1/2"
16	48036	1	Spacer
17	*37347	1	Idler Pulley and Bearing Assembly
	**58106	1	Idler 1 88552 Cap Screw, Hex Head, 1/2" x 2" AR 87364 Washer, 1/2" 1 80679 Lockwasher, 1/2" 1 84946 Hex Nut, 1/2"
18	**52024	2	Spacer
19	36835	1	Eyebolt 2 84944 Hex Nut, 3/8"
20	34490	1	Spring
21	64974	1	Rotor Drive Sheave Weld Assembly 5 88543 Cap Screw, Hex Head, 5/16" x 1" 5 80681 Lockwasher, 5/16" 5 84943 Hex Nut, 5/16"
22	52338	1	Splined Hub 1 80754 Cotter Pin, 3/16" x 1 1/2"

* Used on and Below Serial No. 1120
 ** Used on and Above Serial No. 1121
 AR - As Required

MODEL 33 CROP CHOPPER
CLUTCH, DRIVE SHEAVE AND IDLER GROUP
(BELOW SERIAL NO. 9990)



MODEL 33 CROP CHOPPER
CLUTCH, DRIVE SHEAVE AND IDLER GROUP
(BELOW SERIAL NO. 9990)

Ref. No.	Part No.	No. Used	Description
1	*46717	1	Bearing Support
2	*47225	AR	Shim
3	*46725	1	Friction Disc Assembly (Includes Ref. 4 thru 7)
4	*46726	2	Friction Disc
5	*46727	1	Disc Backing, Large
6	*46934	2	Disc Backing
7	*87770	9	Tubular Iron Rivet, 9/64" x 1/2"
8	245087	1	Sheave Rivet Assembly ---Replaces 46856, 224839 6 87872 Cap Screw, Hex Head, 5/16" x 3/4" 6 80681 Lockwasher, 5/16"
9	*46744	1	Plate
10	*46841	9	Clutch Spring
11	*27697	AR	Washer
12	*46745	1	Clutch Housing (Includes Ref. 13 and 14) 6 88044 Cap Screw, Hex Head, 3/8" x 1 1/2" 6 80680 Lockwasher, 3/8" 1 80713 Lube Fitting, 1/4-28 x 1 7/64"
13	*46807	2	Needle Bearing
14	*46886	2	Seal
15	**58068	1	Clutch Housing 1 87125 Woodruff Key, #TX 3/8" x 2 3/4"
16	197667	1	Sprocket and Holder (Includes Ref. 17) ---Replaces 46729 1 87569 Lube Fitting, 1/4-28, 45°
17	46826	1	Bushing
18	218527	2	Clutch Dog ---Replaces 46787
19	46789	2	Pin
20	87455	2	Roll Pin, 1/8" x 1"
21	46791	1	Double Roller Chain 1 45217 Double Coupler Link AR Not Serviced Regular Link
22	46914	1	V-Belt
23	++58131	1	Idler Pivot Weld Assembly
	+46743	1	Idler Pivot Weld Assembly 1 88043 Cap Screw, Hex Head, 1/2" x 3 1/4" AR 87364 Washer, 1/2" 1 80679 Lockwasher, 1/2" 1 84946 Hex Nut, 1/2"
24	++48036	1	Spacer
	+36383	1	Spacer
25	*37347	1	Idler Pulley and Bearing Assembly
	**58106	1	Idler 1 88552 Cap Screw, Hex Head, 1/2" x 2" 1 87364 Washer, 1/2" 1 80679 Lockwasher, 1/2" 1 84946 Hex Nut, 1/2"
26	**52024	2	Spacer
27	34490	1	Spring
28	36835	1	Eye Bolt 2 84944 Hex Nut, 3/8"
29	64974	1	Rotor Drive Sheave Weld Assembly 5 88543 Cap Screw, Hex Head, 5/16" x 1" 5 80681 Lockwasher, 5/16" 5 84943 Hex Nut, 5/16"
30	52338	1	Splined Hub 1 80754 Cotter Pin, 3/16" x 1 1/2"

* Used on or Below Serial No. 9300

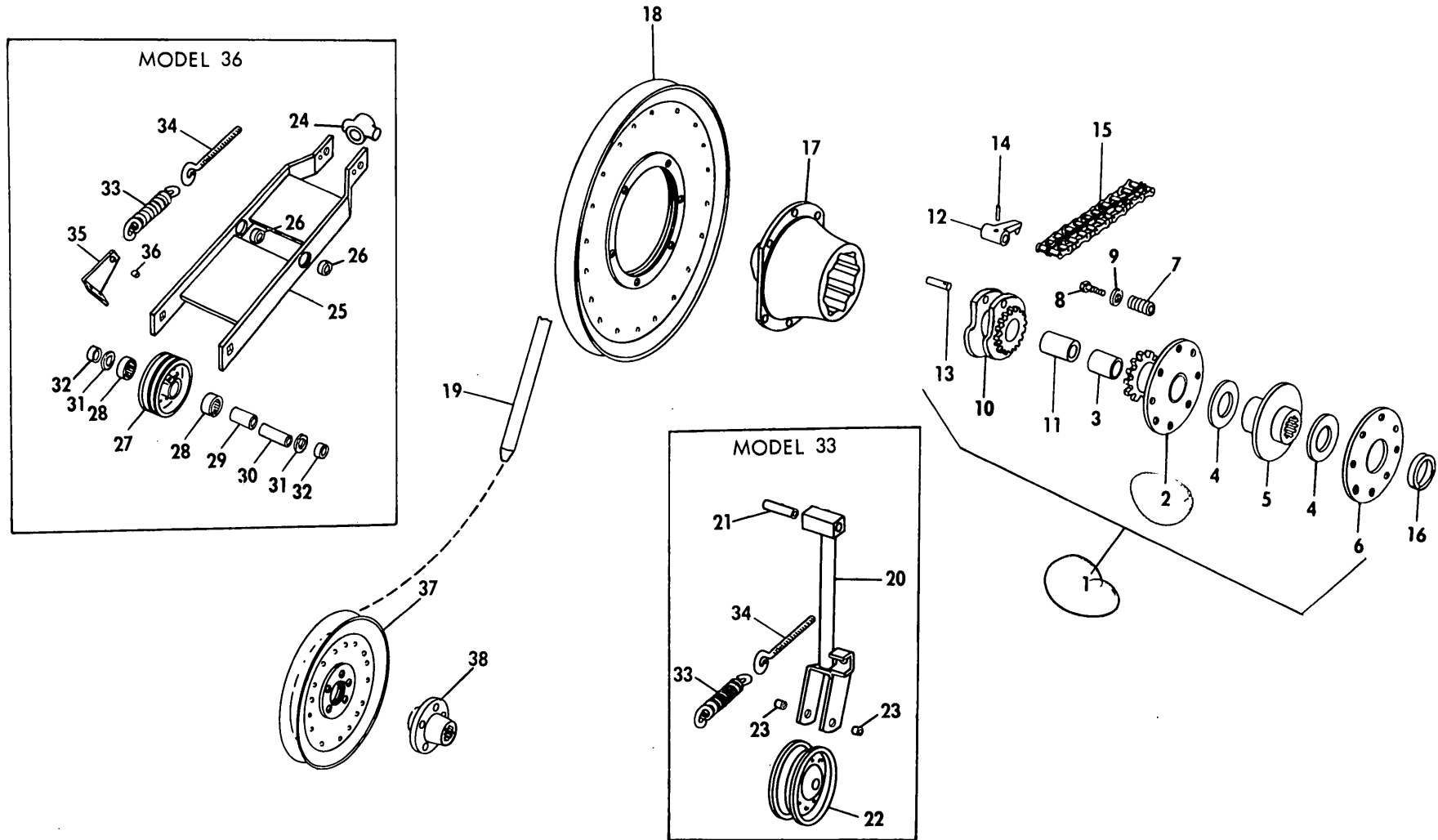
** Used on or Above Serial No. 9301

AR - As Required

+ Used on or Below Serial No. 3337

++ Used on or Above Serial No. 3338

MODEL 36 CROP CHOPPER
MODEL 33 CROP CHOPPER (ABOVE SERIAL NO. 9991)
CLUTCH, DRIVE SHEAVE AND IDLER GROUP



MODEL 36 CROP CHOPPER
 MODEL 33 CROP CHOPPER (ABOVE SERIAL NO. 9991)
 CLUTCH DRIVE SHEAVE AND IDLER GROUP

Ref. No.	Part No.	No. Used		Description
		33	36	
1	→ *285297	1	1	*Slip Clutch Assembly (Includes Ref. 2 thru 15A) ---Replaces 166340
2	§166341	1	1	Plate and Sprocket Assembly (Includes Ref. 3)
	§§285298	1	1	Plate and Sprocket Assembly (Includes Ref. 3)
3	126760	1	1	Bushing
4	127434	2	2	Friction Disc
5	166342	1	1	Clutch Plate Weld Assembly
6	144179	1	1	Clutch Plate
7	32307	8	8	Spring
8	87936	8	8	Cap Screw, Hex Head, 3/8" x 2 1/2"
9	87016	8	8	Washer, 3/8"
10	§197667	1	1	Sprocket and Holder (Includes Ref. 11) ---Replaces 174817, 56497
	§§285299	1	1	Sprocket and Holder (Includes Ref. 11) 1 87569 Lube Fitting, 1/4-28, 45°
11	46826	1	1	Bushing
12	218527	2	2	Clutch Dog ---Replaces 46787
13	46789	2	2	Pin
14	87455	2	2	Roll Pin, 1/8" x 1"
15	§ 56501	1	1	Chain Coupling Assembly, RC #6014 AR 59741 Coupler Link
15A	§§ 46791	1	1	Chain Coupling Assembly, RC #60-2 AR 45217 Coupler Link
16	39374	1	1	Split Spacer
17	58068	1	1	Clutch Housing 1 87125 Woodruff Key #TX 3/8" x 2 3/4"
18	**245087	1		Sheave Weld Assembly ---Replaces 46856, 224839
	*** 56389	1		Sheave Weld Assembly, Single Groove
	56236		1	Double Groove Sheave 6 87872 Cap Screw, Hex Head, 5/16" x 3/4" 6 80681 Lockwasher, 5/16"
19	** 46914	1		"V" Belt, 88.7" Long
	*** 64218	1		"V" Belt, 82.5" Long (Super Construction)
	56213		1	"V" Belt Set (Matched Set of 2)
	56212		2	"V" Belt
20	58131	1		Idler Pivot Weld Assembly 1 88043 Cap Screw, Hex Head, 1/2" x 3 1/4" 1 87364 Washer, 1/2" 1 80679 Lockwasher, 1/2" 1 84946 Hex Nut, 1/2"
21	48036	1		Spacer
22	58106	1		Idler 1 88552 Cap Screw, Hex Head, 1/2" x 2" 1 80679 Lockwasher, 1/2" 1 84946 Locknut, 1/2"
23	52024	2		Spacer
24	179035		1	Swivel 1 88506 Cap Screw, Hex Head, 1/4" x 1 3/4" 1 84060 Locknut, 1/4"
25	+ 56240		1	Idler Arm Weld Assembly 2 87909 Cap Screw, Hex Head, 1/2" x 1" 2 80700 Washer, 1/2" 2 84236 Locknut, 1/2"
	++143905		1	Idler Arm Weld Assembly
	+++178297		1	Idler Arm Weld Assembly 2 88011 Cap Screw, Hex Head, 3/8" x 1 1/4" 2 80702 Washer, 3/8" 2 80680 Lockwasher, 3/8" 2 84944 Hex Nut, 3/8"
26	103060		2	Bushing

CONTINUE

MODEL 36 CROP CHOPPER
 MODEL 33 CROP CHOPPER (ABOVE SERIAL NO. 9991)
 CLUTCH, DRIVE SHEAVE AND IDLER GROUP (CONTINUED)

Ref. No.	Part No.	No. Used		Description
		33	36	
27	++++ 63648		1	Idler Pulley and Bearing Assembly, Flat
	+++178299		1	Idler Pulley and Bearing Assembly, 2 Groove
				1 87414 Lube Fitting, 1/4-28
				1 88177 Bolt, Round Head, Short Square Neck, 1/2" x 3 3/4"
				2 80700 Washer, 1/2"
				1 80679 Lockwasher, 1/2"
			1 84946 Hex Nut, 1/2"	
28	36433		2	Needle Bearing
29	36434		1	Inner Race
30	48921		1	Spacer
31	56832		2	Washer
32	43414		2	Spacer
33	34490	1		Spring
	10013		1	Spring
				1 87140 Cap Screw, Hex Head, 1/4" x 1"
				1 84060 Locknut, 1/4"
34	36835	1		Eyebolt
				2 84944 Hex Nut, 3/8"
	+++ 27953		1	Eyebolt
				2 84943 Hex Nut, 5/16"
	+++138539		1	Eyebolt
				2 84944 Hex Nut, 3/8"
35	¶179034		1	Bracket
				2 87639 Bolt, Round Head, Short Square Neck, 5/16" x 3/4"
				2 80681 Lockwasher, 5/16"
				2 84943 Hex Nut, 5/16"
36	++ 25457		1	Spacer, 1/4" Long
				1 88543 Cap Screw, Hex Head, 5/16" x 1"
				1 80664 Washer, 5/16"
				1 80681 Lockwasher, 5/16"
				1 84943 Hex Nut, 5/16"
37	64974	1		Rotor Drive Sheave
				5 88543 Cap Screw, Hex Head, 5/16" x 1"
				5 80681 Lockwasher, 5/16"
				5 84943 Hex Nut, 5/16"
	56238		1	Rotor Drive Sheave (Straight Spline, Drilled for Cotter Pin)
				1 80752 Cotter Pin, 1/4" x 2 1/2"
195056		1	Rotor Drive Sheave (Tapered Spline) (Use with 195077 Rotor)	
				1 84860 Hex Castellated Nut, 3/4"
				1 80754 Cotter Pin, 3/16" x 1 1/2"
38	52338	1		Splined Hub
				1 80752 Cotter Pin, 1/4" x 2 1/2"

* On Models 33 and 36 Crop Choppers this Slip Clutch and its components replace the Connector Sprocket listed on Pages 14 and 15. In addition, conversion to the Slip Clutch Assembly on Model 33's above Serial No. 9991 and Model 36's built prior to the 1968 Fall Terms Change is possible by ordering 285297 when replacing 56496.

** Used on or below Serial No. 11063 on Model 33

*** Used on or above Serial No. 11064 on Model 33

+ Used on or below Serial No. 5099 on Model 36

++ Used on and between Serial No's 5100 and 116000 on Model 36

+++ Used on or above Serial No. 116001 on Model 36

++++ Used on or below Serial No. 116000 on Model 36

¶ Used on and between Serial No's 116001 and 131400 on Model 36

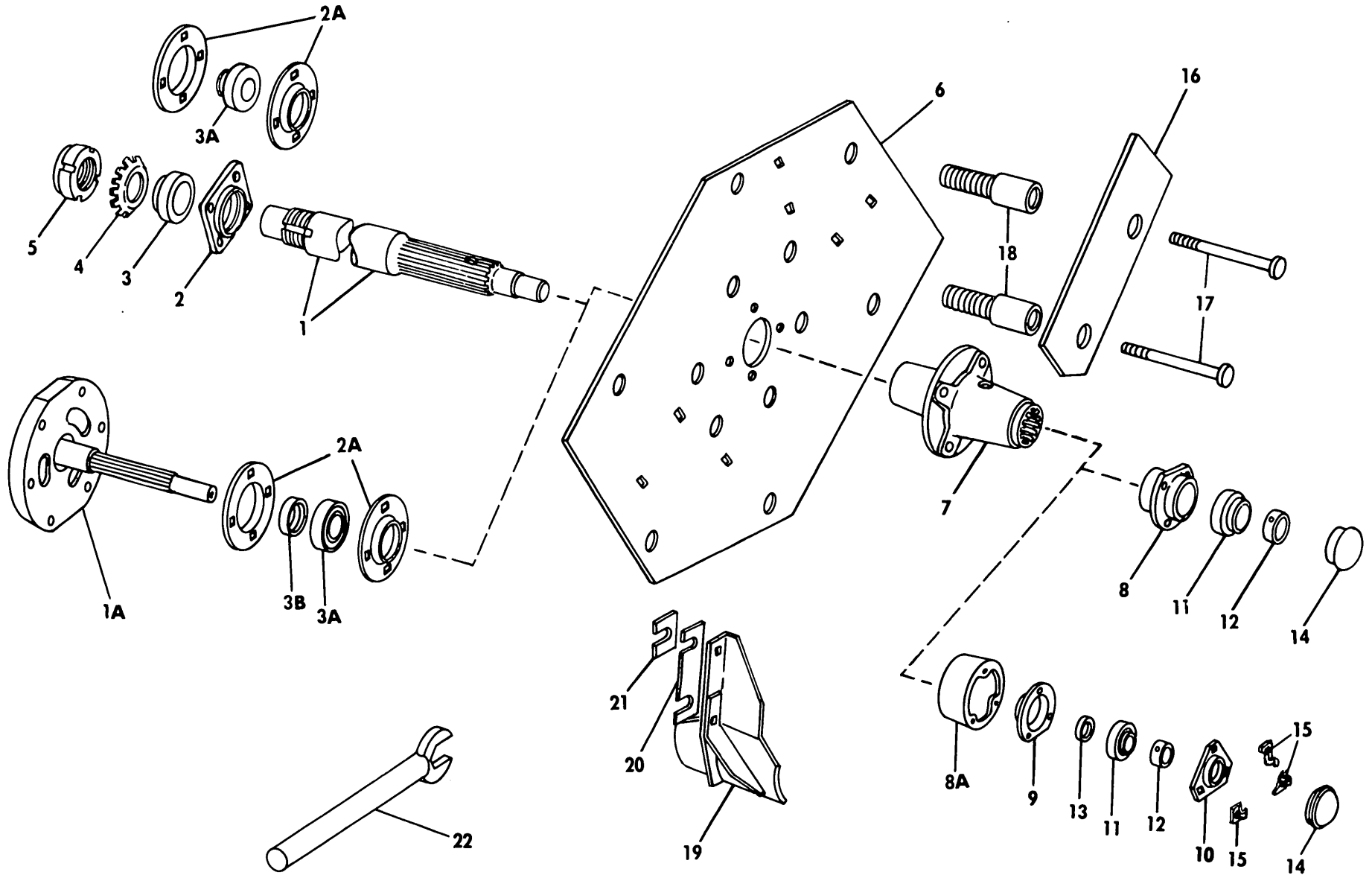
§ Used on or below Serial No. 233594 on Model 33, 254349 on Model 36

§§ Used on or above Serial No. 233595 on Model 33, 254350 on Model 36

NOTES

MODELS 33 AND 36 CROP CHOPPERS
FLYWHEEL GROUP

24



MODELS 33 AND 36 CROP CHOPPERS
FLYWHEEL GROUP

Ref. No.	Part No.	No. Used	Description
1	** 58067	1	Drive Shaft
1A	* 48221	1	Drive Shaft Weld Assembly
2	¶¶ 134493	1	Bearing Housing 1 87569 Lube Fitting, 1/4-28, 45° 4 87670 Cap Screw, Hex Head, 1/2" x 1 1/4" 4 80679 Lockwasher, 1/2"
2A	¶ 46912	2	Flangette 4 87909 Cap Screw, Hex Head, 1/2" x 1"
3	¶¶ 179760	1	Bearing, Self-Aligning, 1 11/16 I.D. ---Replaces 134492
3A	*** 58101	§ 1	§ Bearing, Self-Aligning, 1 11/16 I.D.
	* 47298	1	Bearing, Self-Aligning, 1 3/4 I.D.
3B	* 45631	1	Collar 1 80425 Set Screw, Socket Head, Cup Point 3/8" x 3/8"
4	** 58105	1	Lockwasher, Bearing
5	** 58104	1	Locknut, Bearing
6	46836	1	Flywheel Plate
7	134836	1	Hub ---Replaces 46719 4 88062 Cap Screw, Hex Head, 5/8" x 1 1/2" 4 84057 Lockwasher, 5/8" 1 47111 Special Set Screw 1 84970 Jam Nut, 1/2"
8	¶¶ 134494	1	Bearing Housing 1 87414 Lube Fitting, 1/4-28 3 88206 Cap Screw, Hex Head, 3/8" x 1" 3 80680 Lockwasher, 3/8"
8A	¶ 46718	1	Bearing Support
9	¶ 245743	1	Shield and Bearing Support ---Replaces 46913 1 87414 Lube Fitting, 1/4-28
10	¶ 43048	1	Flangette
11	++ 45882	1	Ball Bearing, 1 1/8" I.D.
	+ 38766	1	Ball Bearing, 1 1/4" I.D.
12	++ 45876	1	Bearing Collar, 1 1/8" I.D.
	+ 38767	1	Bearing Collar 1 1/4" I.D.
13	¶ 29141	1	Oil Seal
14	249127	1	Hub Cap ---Replaces 72015
15	¶ 48205	3	Clip 3 88206 Cap Screw, Hex Head, 3/8" x 1"
16	46811	3	Knife
17	48688	6	Plow Bolt 6 87880 Lockwasher, Flat, Internal Tooth, 3/4" 6 84948 Hex Nut, 3/4"
18	46833	6	Knife Support 12 87604 Hex Jam Nut, 1 1/2" UNF
19	65696	3	Paddle Assembly 3 87528 Bolt, Round Head, Short Square Neck, 5/8" x 2" 3 84607 Bolt, Round Head, Short Square Neck, 5/8" x 2 1/2" 6 84057 Lockwasher, 5/8" 6 84947 Hex Nut, 5/8"
20	48645	AR	Shim, .060" thick
	66961	AR	Shim, .036" thick
21	48689	AR	Shim, .060" thick
	66271	AR	Shim, .036" thick
22	46781	1	Cutterhead Wrench

+ Used on or below Serial No. 2290 on Model 33, not used on Model 36

++ Used on or above Serial No. 2291 on Model 33, used on all Model 36

* Used on or below Serial No. 9300 on Model 33, not used on Model 36

** Used on or above Serial No. 9301 on Model 33, used on all Model 36

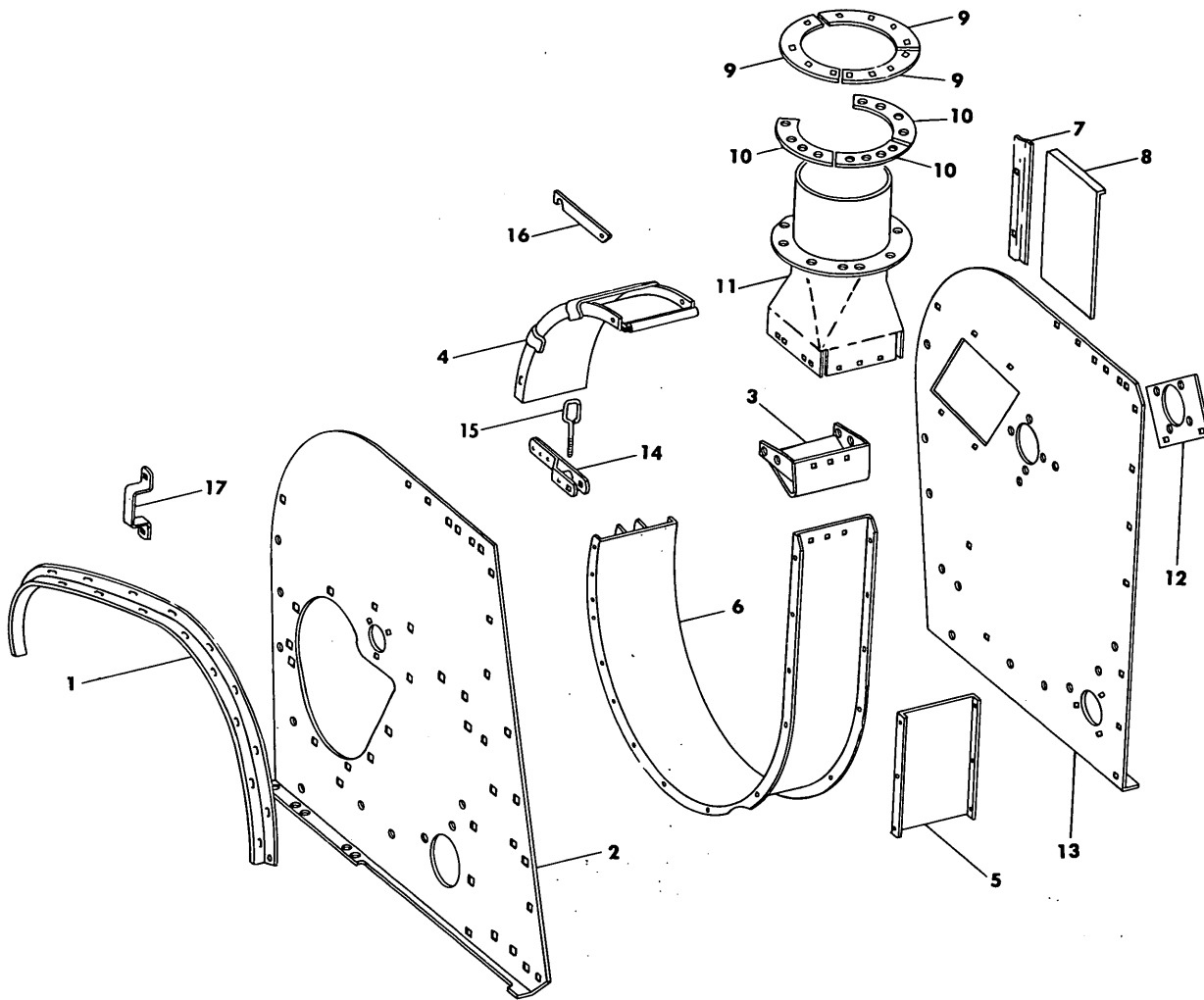
*** Used between Serial No.'s. 9301 and 18889 on Model 33, used on or below Serial No. 20299 on Model 36

¶ Used on or below Serial No. 18889 on Model 33, used on or below Serial No. 20299 on Model 36

¶¶ Used on or above Serial No. 18890 on Model 33, used on or above Serial No. 20300 on Model 36

§ 58101 is no longer available. When replacing 58101, use 1 each of 134493 Housing and 179760 Bearing. 25

MODEL 33 AND 36 CROP CHOPPER
CUTTERHEAD HOUSING GROUP



Ref. No.	Part No.	No. Used	Description
1	46921	1	Cover Support, L.H. 18 88682 Carriage Bolt, 3/8" x 1" 18 80702 Plain Washer, 3/8" 18 80680 Lockwasher, 3/8" 18 84944 Hex Nut, 3/8"
2	46741	1	Cutterhead Housing, R.H. 4 87909 Cap Screw, Hex Head, 1/2" x 1" 4 80679 Lockwasher, 1/2" 4 84946 Hex Nut, 1/2"
3	65694	1	Short Band Weld Assembly 1 87527 Carriage Bolt, 3/8" x 1 3/4" 2 84867 Carriage Bolt, 3/8" x 3/4" 3 80680 Lockwasher, 3/8" 3 84944 Hex Nut, 3/8"
4	47059	1	Door Weld Assembly 1 87790 Cap Screw, Hex Head, 3/8" x 8" 2 80702 Plain Washer, 3/8" 1 84040 Locknut, 3/8"
5	47040	1	Channel 6 84867 Carriage Bolt, 3/8" x 3/4" 6 80680 Lockwasher, 3/8" 6 84944 Hex Nut, 3/8"

CONTINUE

MODEL 33 AND 36 CROP CHOPPER
CUTTERHEAD AND HOUSING GROUP (CONTINUED)

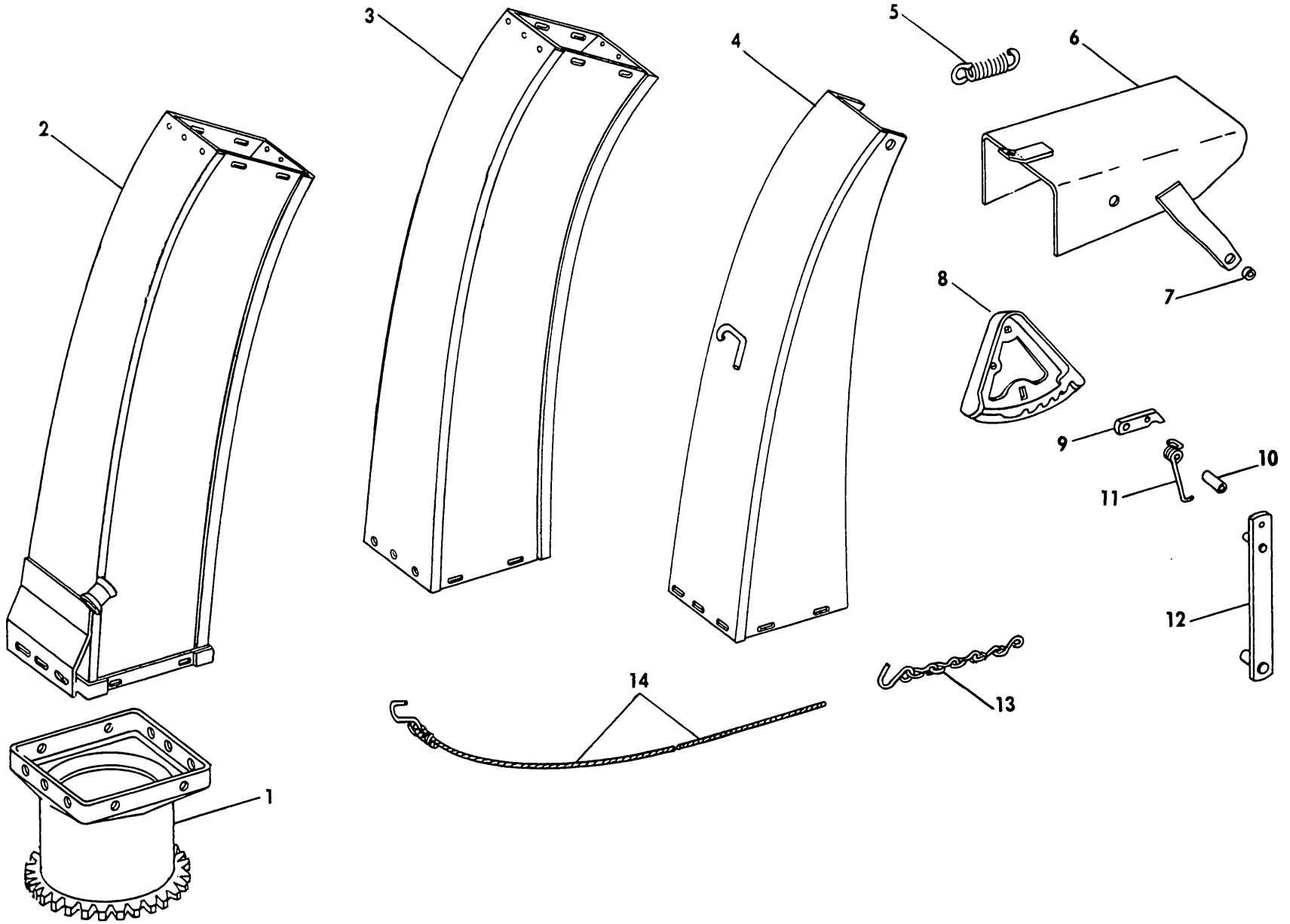
Ref. No.	Part No.	No. Used	Description
6	58166	1	Cutterhead Band Weld Assembly 11 88434 Cap Screw, Hex Head, 3/8" x 3/4" 1 88206 Cap Screw, Hex Head, 3/8" x 1" 1 88428 Cap Screw, Hex Head, 3/8" x 1 3/4" 5 87909 Cap Screw, Hex Head, 1/2" x 1" 7 88682 Carriage Bolt, 3/8" x 1" 1 87101 Machine Screw, Truss Head, 3/8" x 3/4" 1 80702 Plain Washer, 3/8" 21 80680 Lockwasher, 3/8" 5 80679 Lockwasher, 1/2" 21 84944 Hex Nut, 3/8" 5 84946 Hex Nut, 1/2"
7	47063	2	Guide 4 84826 Carriage Bolt, 5/16" x 3/4" 4 80681 Lockwasher, 5/16" 4 84943 Hex Nut, 5/16"
8	47064	1	Cover
9	47032	*3	Quarter Ring
10	49070	*3	Spacer, Quarter Ring 5 88632 Machine Bolt, Round Head, Short Square Neck, 3/8" x 1 1/2" 4 87588 Machine Bolt, Round Head, Short Square Neck, 3/8" x 2" 4 80702 Plain Washer, 3/8" 9 80680 Lockwasher, 3/8" 9 84944 Hex Nut, 3/8"
11	46924	1	Hat Weld Assembly 14 88018 Machine Bolt Round Head, Short Square Neck, 1/2" x 1" 14 80679 Lockwasher, 1/2" 14 84946 Hex Nut, 1/2"
12	46664	1	Bearing Support Plate 2 88992 Machine Bolt, Round Head, Short Square Neck, 5/16" x 1" 2 80681 Lockwasher, 5/16" 2 84943 Hex Nut, 5/16"
13	48027 58072	+1 ++1	Cutterhead Housing Weld Assembly, L.H. Cutterhead Housing Weld Assembly, L.H. 5 87909 Cap Screw, Hex Head, 1/2" x 1" 1 88783 Machine Bolt, Round Head, Short Square Neck 1/2" x 1 1/2" 6 80679 Lockwasher, 1/2" 6 84946 Hex Nut, 1/2"
14	38283	1	Door Lock Assembly 2 88682 Carriage Bolt, 3/8" x 1" 2 88902 Locknut, 3/8"
15	38231	1	Eyebolt 1 84970 Hex Jam Nut, 1/2"
16	47065	1	Cover Latch 1 87494 Carriage Bolt, 3/8" x 1 1/4" AR 80702 Plain Washer, 3/8" 2 88902 Locknut, 3/8"
17	47090	1	Bracket

* Used on and below Serial No. 11799 on Model 33 and on and below Serial No. 3199 on Model 36

+ Used on and below Serial No. 9300 on Model 33

++ Used on Model 36 and on and above Serial No. 9301 on Model 33

MODEL 33 AND 36 CROP CHOPPER
DISCHARGE SPOUT GROUP



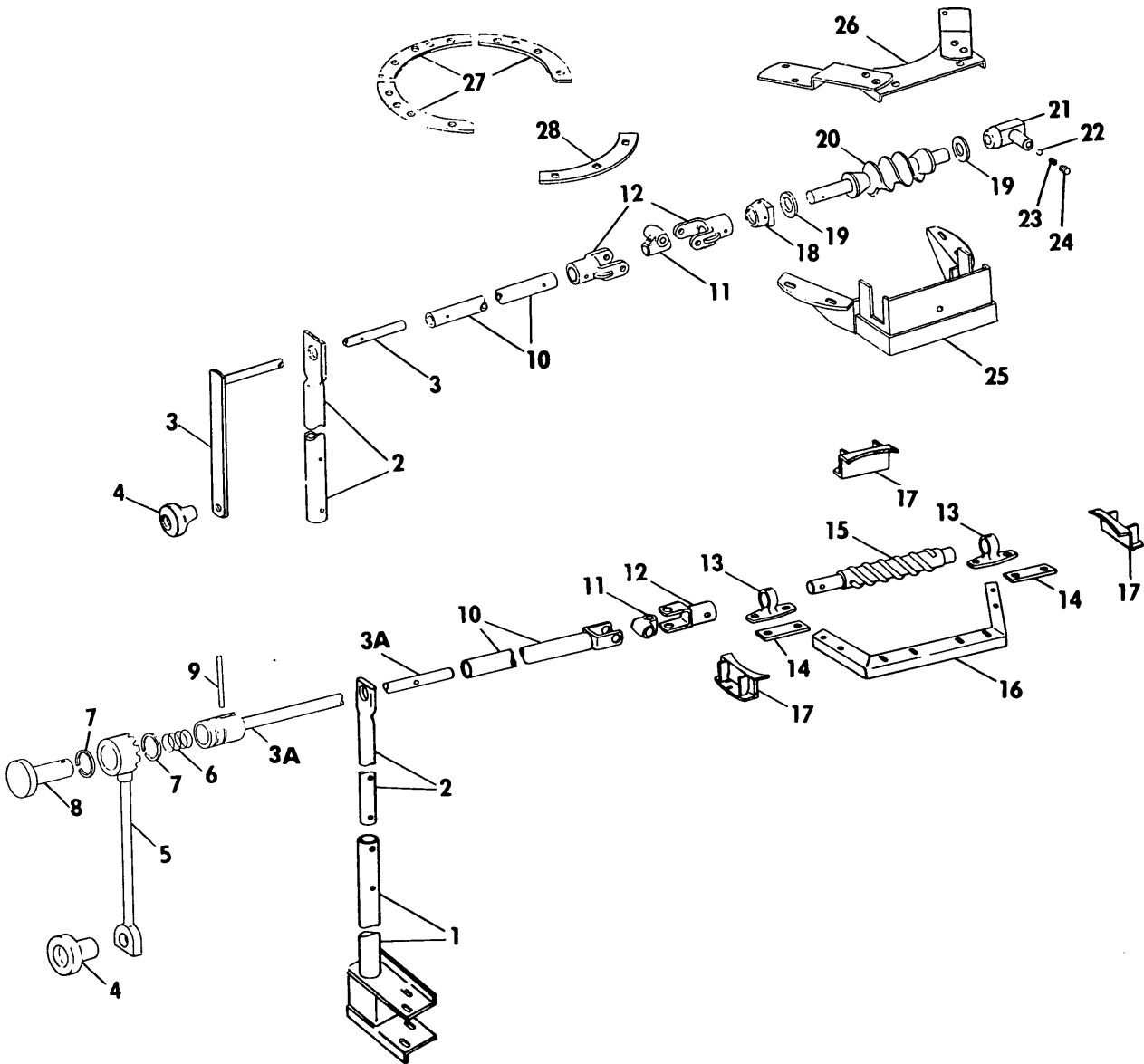
MODEL 33 AND 36 CROP CHOPPER
DISCHARGE SPOUT GROUP

Ref. No.	Part No.	No. Used	Description
1	58061	*1	Discharge Spout Base
	121468	**1	2 87414 Lube Fitting, 1/4", Straight Transition Section Weld Assembly
			4 88456 Cap Screw, Hex Head, 3/8" x 3 3/4"
			4 80680 Lockwasher, 3/8"
			4 84944 Hex Nut, 3/8"
2	46950	1	Discharge Spout, First Section
			6 87686 Machine Bolt, Round Head, Short Square Neck, 3/8" x 1"
			3 88865 Machine Bolt, Round Head, Short Square Neck, 3/8" x 1 1/4"
			11 80702 Plain Washer, 3/8"
			9 80680 Lockwasher, 3/8"
			7 84040 Locknut, 3/8"
			2 84944 Hex Nut, 3/8"
3	46941	1	Discharge Spout, Second Section
			14 87596 Machine Bolt, Round Head, Short Square Neck, 3/8" x 3/4"
			4 87101 Machine Screw, Truss Head, 3/8" x 3/4"
			18 80702 Plain Washer, 3/8"
			18 80680 Lockwasher, 3/8"
			14 84040 Locknut, 3/8"
			4 84944 Hex Nut, 3/8"
4	46967	1	Discharge Spout, Third Section
			5 87596 Machine Bolt, Round Head, Short Square Neck, 3/8" x 3/4"
			2 87101 Machine Screw, Truss Head, 3/8" x 3/4"
			7 80702 Plain Washer, 3/8"
			7 80680 Lockwasher, 3/8"
			5 84040 Locknut, 3/8"
			2 84944 Hex Nut, 3/8"
5	35544	1	Spring
6	46971	1	Deflector
			2 84896 Machine Screw, Truss Head, 5/16" x 3/4"
			2 87362 Plain Washer, 5/16"
			2 80681 Lockwasher, 5/16"
			2 84943 Hex Nut, 5/16"
7	33114	2	Spacer
8	46966	1	Ratchet
			1 88865 Machine Bolt, Round Head, Short Square Neck, 3/8" x 1 1/4"
			1 80702 Plain Washer, 3/8"
			1 80680 Lockwasher, 3/8"
			1 84040 Locknut, 3/8"
9	183013	1	Quadrant Pawl ---Replaces 39124
10	46970	1	Spacer
11	39122	1	Torsion Spring
12	46927	1	Deflector Adjustment
			1 80756 Cotter Pin, 1/8" x 3/4"
			1 87593 Carriage Bolt, 3/8" x 2 1/2"
			1 80680 Lockwasher, 3/8"
			1 80702 Plain Washer, 3/8"
			1 84040 Locknut, 3/8"
13	46973	1	Deflector Chain Assembly
			1 87398 Cotter Pin, 3/16" x 1 1/4"
14	46972	1	Deflector Rope Assembly
			1 34455 "S" Hook

* Used on and below Serial No. 11799 on Model 33 and Serial No. 3199 on Model 36

** Used on and above Serial No. 11800 on Model 33 and Serial No. 3200 on Model 36

MODEL 33 AND MODEL 36 CROP CHOPPER
ADJUSTABLE SPOUT



Ref. No.	Part No.	No. Used	Description
1	** 36042	1	Bracket Weld Assembly (For Old Style Worm Drive)
1A	* 49102	1	Bracket Weld Assembly (For New Style Worm Drive)
			2 88576 Cap Screw, Hex Head, 1/2" x 5 1/2"
			2 87364 Washer, 1/2"
			2 80679 Lockwasher, 1/2"
			2 84946 Hex Nut, 1/2"
2	35476	1	Worm Drive Holder
			1 88436 Cap Screw, Hex Head, 3/8" x 2"
			1 88902 Locknut, 3/8"
3	35785	1	Worm Drive Weld Assembly
3A	129760	1	Worm Drive Weld Assembly
4	33781	1	Knob
			1 87936 Cap Screw, Hex Head, 3/8" x 2 1/2"
			1 80702 Plain Washer, 3/8"
			1 84944 Hex Nut, 3/8"
5	129757	1	Arm Weld Assembly
6	26372	1	Spring

MODEL 33 AND MODEL 36 CROP CHOPPER
ADJUSTABLE SPOUT (CONTINUED)

Ref. No.	Part No.	No. Used	Description
7	36313	2	Snap Ring
8	129758	1	Plunger
9	88446	1	Groove Pin, Drive-Lok, #5, 3/16" x 2 1/4"
10	64552	1	Tube and Yoke Weld Assembly ---Replaces 46780
			2 88275 Cap Screw, Hex Head, 5/16" x 1 1/2"
			2 80680 Lockwasher, 5/16"
			2 84943 Hex Nut, 5/16"
11	35717	1	Universal Block
			1 87414 Lube Fitting, 1/4"-28
			2 15081 Drilled Rivet
			2 80756 Cotter Pin, 1/8" x 3/4"
12	35720	1 or 2	Yoke Weld Assembly
			AR 25461 Drilled Rivet
			AR 80756 Cotter Pin, 1/8" x 3/4"
13	*128952	2	Worm Bearing
			2 87414 Lube Fitting, 1/4-28
			4 88206 Cap Screw, Hex Head, 3/8" x 1"
			4 80702 Washer, 3/8"
			4 84944 Hex Nut, 3/8"
14	*121472	2	Spacer
15	*129834	1	Worm Weld Assembly
16	*121469	1	Support
			2 88044 Cap Screw, Hex Head, 3/8" x 1 1/2"
			2 80680 Lockwasher, 3/8"
			2 84944 Hex Nut, 3/8"
17	*121435	3	Clamp Weld Assembly
			6 87411 Cap Screw, Hex Head, 3/8" x 4 1/4"
			6 80702 Washer, 3/8"
			6 80680 Lockwasher, 3/8"
			6 84944 Hex Nut, 3/8"
18	** 35718	1	Worm Bearing, Front
19	** 27531	AR	Special Washer
20	** 47632	1	Deflector Worm
21	** 47287	1	Worm Bearing, Rear
			1 80869 Lube Fitting, 1/8 P.T.
22	**110680	1	Steel Ball
23	**110660	1	Spring
24	** 88445	1	Cap Screw, Hex Head, 9/16" x 1 1/4" UNF
			1 87310 Jam Nut, 9/16" UNF
25	** 47031	1	Hanger Weld Assembly
26	** 47575	1	Worm Cover Weld Assembly
			2 88512 Cap Screw, Hex Head, 5/16" x 4 1/2"
			4 80681 Lockwasher, 5/16"
			4 84943 Hex Nut, 5/16"
27	** 49071	3	Spacer Ring
28	** 47032	1	Quarter Ring (Used below Serial No. 6429 on Model 33 only)

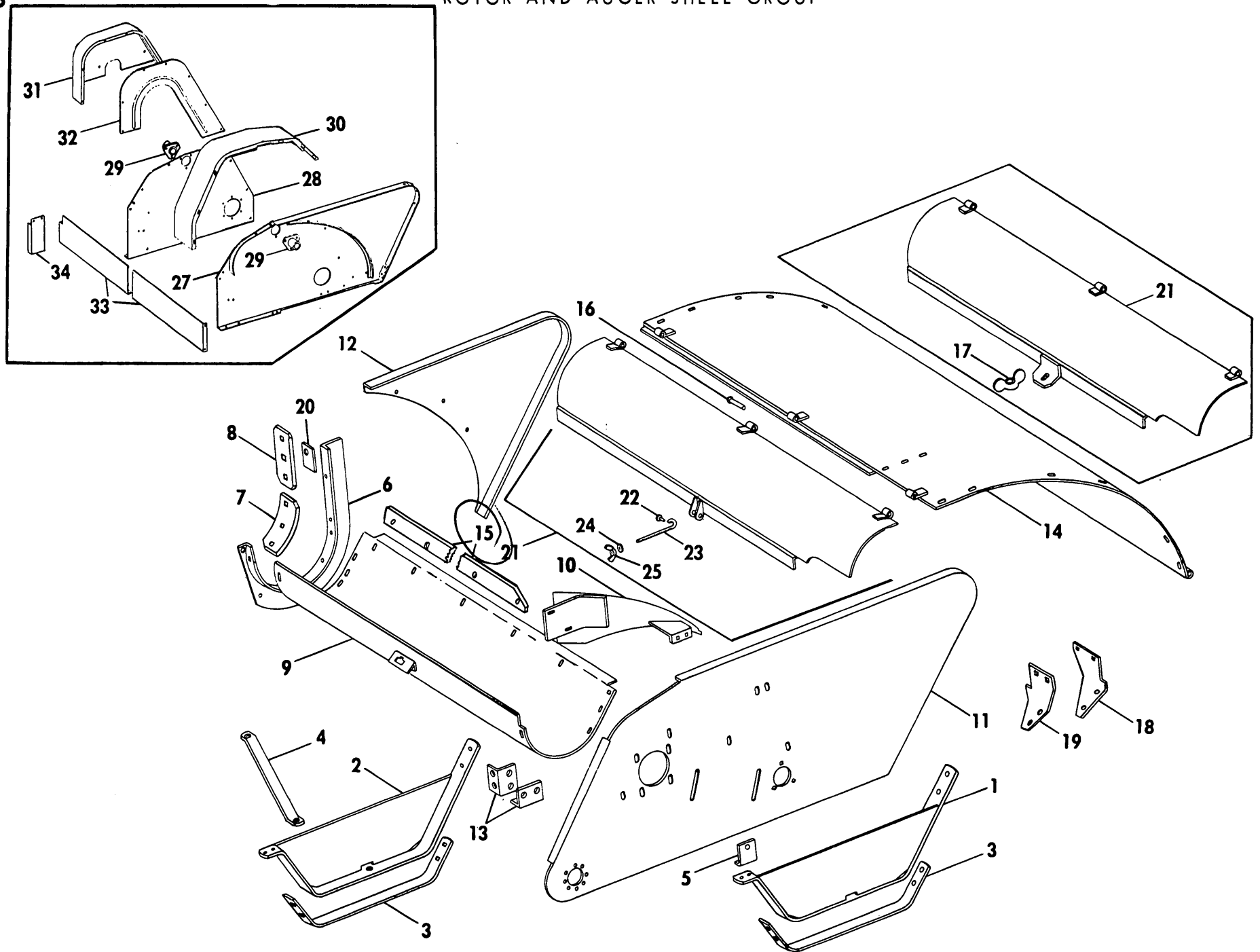
AR - As Required

* New style worm and drive, used on machines having the discharge spout base with slotted ring.

** Old style worm and drive, used on machines having the discharge spout base with gear teeth.

MODEL 31 CROP SHREDDER
MODEL 33 AND 36 CROP CHOPPERS
ROTOR AND AUGER SHELL GROUP

32



MODEL 31 CROP SHREDDER
MODEL 33 AND 36 CROP CHOPPER
ROTOR AND AUGER SHELL GROUP

Ref. No.	Part No.	No. Used			Description
		31	33	36	
1	46761	1	1	1	Shoe Support Weld Assembly, R.H. 2 84470 Machine Screw, Truss Head, 3/8" x 1 1/4" 2 80702 Plain Washer, 3/8" 2 80680 Lockwasher, 3/8" 2 84944 Hex Nut, 3/8"
2	47142	1	1	1	Shoe Support Weld Assembly, L.H. 2 88011 Cap Screw, Hex Head, 3/8" x 1 1/4" 2 84470 Machine Screw, Truss Head, 3/8" x 1 1/4" 4 80702 Plain Washer, 3/8" 4 80680 Lockwasher, 3/8" 4 84944 Hex Nut, 3/8"
3	46760	2	2	2	Shoe 8 87494 Carriage Bolt, 3/8" x 1 1/4" 8 80702 Plain Washer, 3/8" 8 80680 Lockwasher, 3/8" 8 84944 Hex Nut, 3/8"
4	46953	1	1	1	Shoe Support, L.H. 1 88206 Cap Screw, Hex Head, 3/8" x 1" 1 88011 Cap Screw, Hex Head, 3/8" x 1 1/4" 1 80702 Plain Washer, 3/8" 2 80680 Lockwasher, 3/8" 2 84944 Hex Nut, 3/8"
5	47084	1	1	1	Bracket 1 88434 Cap Screw, Hex Head, 3/8" x 3/4" 2 88011 Cap Screw, Hex Head, 3/8" x 1 1/4" 3 80680 Lockwasher, 3/8" 3 84944 Hex Nut, 3/8"
6	46756		1	1	Auger Bottom Support, Left Side 2 88206 Cap Screw, Hex Head, 3/8" x 1" 5 88682 Carriage Bolt, 3/8" x 1" 2 80702 Plain Washer, 3/8" 7 80680 Lockwasher, 3/8" 7 84944 Hex Nut, 3/8"
7	46819		1	1	Shear Plate Curved 3 88632 Carriage Bolt, Grade 5, 3/8" x 1 1/2" 3 80702 Plain Washer, 3/8" 3 80680 Lockwasher, 3/8" 3 84944 Hex Nut, 3/8"
8	46818		1	1	Shear Plate, Straight 2 88632 Carriage Bolt, Grade 5, 3/8" x 1 1/2" 2 80702 Plain Washer, 3/8" 2 80680 Lockwasher, 3/8" 2 84944 Hex Nut, 3/8"
9	50780		1		Auger Bottom Weld Assembly 5 88206 Cap Screw, Hex Head, 3/8" x 1" 1 88682 Carriage Bolt, 3/8" x 1" 5 80702 Plain Washer, 3/8" 6 80680 Lockwasher, 3/8" 6 84944 Hex Nut, 3/8"
	50677		1		Auger Bottom Weld Assembly 5 88206 Cap Screw, Hex Head, 3/8" x 1" 1 88682 Carriage Bolt, 3/8" x 1" 5 80702 Plain Washer, 3/8" 6 80680 Lockwasher, 3/8" 6 84944 Hex Nut, 3/8"

CONTINUE

MODEL 31 CROP CHOPPER
 MODEL 33 AND 36 CROP CHOPPER
 ROTOR AND AUGER SHELL GROUP (CONTINUED)

Ref. No.	Part No.	No. Used			Description
		31	33	36	
10	46708	1	1	1	Deflector Weld Assembly 4 88682 Carriage Bolt, 3/8" x 1" 4 80702 Plain Washer, 3/8" 4 80680 Lockwasher, 3/8" 4 84944 Hex Nut, 3/8"
11	46850	+1	+1		Side Sheet, R.H.
	67553		+1	1	Side Sheet, R.H. --- Replaces 58070
	67553		1	1	Side Sheet Weld Assembly
12	47027		1	1	Divider Weld Assembly 4 84867 Carriage Bolt, 3/8" x 3/4" 4 80680 Lockwasher, 3/8" 4 84944 Hex Nut, 3/8"
13	46674		2	2	Angle 4 88206 Cap Screw, Hex Head, 3/8" x 1" 4 88682 Carriage Bolt, 3/8" x 1" 8 80680 Lockwasher, 3/8" 8 84944 Hex Nut, 3/8"
14	47054	1	1		Rotor Hood Weld Assembly 16 88682 Carriage Bolt, 3/8" x 1" 16 80702 Plain Washer, 3/8" 16 80680 Lockwasher, 3/8" 16 84944 Hex Nut, 3/8"
	50680			1	Rotor Hood Weld Assembly 16 88682 Carriage Bolt, 3/8" x 1" 16 80702 Plain Washer, 3/8" 16 80680 Lockwasher, 3/8" 16 84944 Hex Nut, 3/8"
15	→ 249154		1	1	Baffle
16	47221	3	3	3	Drilled Rivet 3 80756 Cotter Pin 1/8" x 3/4"
17	110310		**		Wing Nut
18	47173		1	1	Shoe Support Brace 2 88682 Carriage Bolt, 3/8" x 1" 2 80702 Plain Washer, 3/8" 2 80680 Lockwasher, 3/8" 2 84944 Hex Nut, 3/8"
19	56331			1	Brace, L.H. 2 88682 Carriage Bolt, 3/8" x 1" 2 80702 Plain Washer, 3/8" 2 80680 Lockwasher, 3/8" 2 84944 Hex Nut, 3/8"
20	47568		1	1	Spacer 1 88632 Carriage Bolt, Grade 5, 3/8" x 1 1/2" 1 80702 Plain Washer, 3/8" 1 80680 Lockwasher, 3/8" 1 84944 Hex Nut, 3/8"
21	285301	1	1		Door Assembly (Incl. Ref. 22 thru 26) ---Replaces **47053, 50770
	285302			1	Door Assembly (Includes Ref. 22 thru 26) ---Replaces 50683
22	88011	1	*	1	Cap Screw, Hex Head, 3/8" x 1 1/4"
23	36835	1	*	1	Eyebolt
24	80702	1	*	1	Plain Washer, 3/8"
25	80840	1	*	1	Wing Nut, 3/8"
26	84040	1	*	1	Locknut, 3/8"

CONTINUE

MODEL 31 CROP SHREDDER
 MODEL 33 AND 36 CROP CHOPPER
 ROTOR AND AUGER SHELL GROUP (CONTINUED)

Ref. No.	Part No.	No. Used			Description
		31	33	36	
27	49961	1			Rotor Hood Support and Side Sheet Weld Assembly 5 87909 Cap Screw, Hex Head, 1/2" x 1" 7 88682 Carriage Bolt, 3/8" x 1" 7 80702 Plain Washer, 3/8" 5 80679 Lockwasher, 1/2" 7 80680 Lockwasher, 3/8" 5 84946 Hex Nut, 1/2" 7 84944 Hex Nut, 3/8"
28	49950	1			Side Sheet, L.H. 7 87909 Cap Screw, Hex Head, 1/2" x 1" 1 88018 Machine Bolt, Round Head, Short Square Neck, 1/2" x 1" 8 80679 Lockwasher, 1/2" 8 84946 Hex Nut, 1/2"
29	49929	2			Hub Weld Assembly 1 87598 Set Screw, Square Head, Cone Point, 3/8" x 1" 1 84969 Hex Jam Nut, 3/8" 6 87909 Cap Screw, Hex Head, 1/2" x 1" 6 80679 Lockwasher, 1/2" 6 84946 Hex Nut, 1/2"
30	49951	1			Wrapper 5 87639 Machine Bolt, Round Head, Short Square Neck, 5/16" x 3/4" 4 88573 Cap Screw, Hex Head, 1/4" x 3/4" 5 87362 Plain Washer, 5/16" 4 87361 Plain Washer, 1/4" 5 80681 Lockwasher, 5/16" 4 80682 Lockwasher, 1/4" 5 84943 Hex Nut, 5/16" 4 84942 Hex Nut, 1/4"
31	49955	1			Flange and Side Shield Weld Assembly 2 88832 Carriage Bolt, 1/4" x 3/4" 2 80682 Lockwasher, 1/4" 2 84942 Hex Nut, 1/4"
32	49954	1			Side Shield Weld Assembly 7 88542 Cap Screw, Hex Head, 1/4" x 1/2" 7 80682 Lockwasher, 1/4"
33	49939	1			Cover Support and Latch Weld Assembly 4 87596 Machine Bolt, Round Head, Short Square Neck, 3/8" x 3/4" 1 80702 Plain Washer, 3/8" 4 80680 Lockwasher, 3/8" 4 84944 Hex Nut, 3/8"
34	52090	1			Side Sheet Support 3 88434 Cap Screw, Hex Head, 3/8" x 3/4" 3 80680 Lockwasher, 3/8" 3 84944 Hex Nut, 3/8"

* Used on and above Serial No. 5792.

** Used on and below Serial No. 5791.

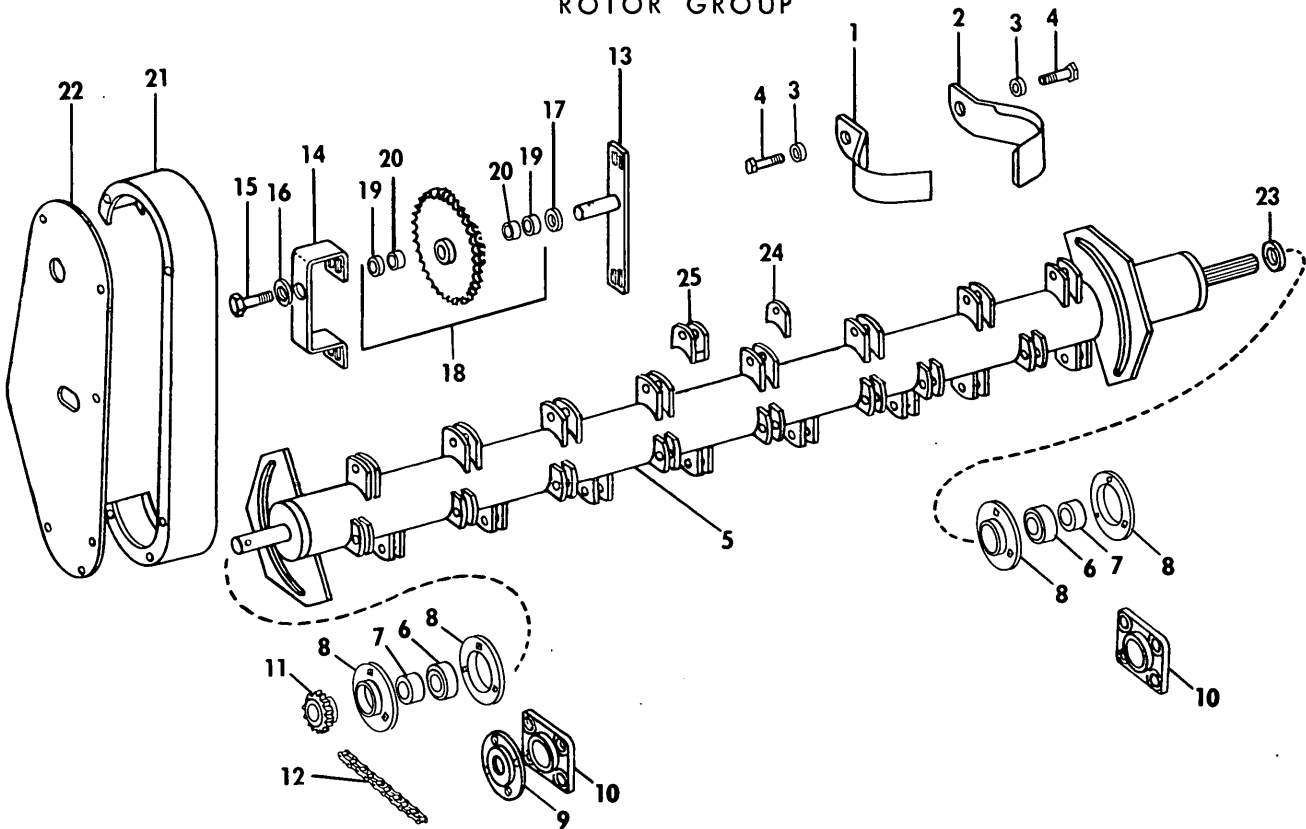
+ Used on and below Serial No. 1120 on 31.

+ Used on and below Serial No. 9300 on 33.

++ Used on and between Serial No. 9301 and 11799 on the Model 33, and between 1001 and 3199 on the Model 36

† Used on and above Serial No. 11800 on the Model 33 and on and above Serial No. 3200 on the Model 36.

MODEL 31 CROP SHREDDER
 MODEL 33 AND 36 CROP CHOPPER
 ROTOR GROUP



Ref. No.	Part No.	No. Used			Description
		31	33	36	
1	46915	**24			Flail, R.H.
2	46916	** 8			Flail, L.H.
3	49945	32	*32	40	Flail, Reversible
3	46710	32	32	40	Spacer
4	167053	32	32	40	Special Bolt, Grade 5 AR 130358 Special Washer AR 88718 Locknut, 5/8" Grade B
5	*** 52092	1	* 1		Rotor Weld Assembly (Not Shown)
	*** 46767		** 1		Rotor Weld Assembly (Shown)
	195077			1	Rotor Weld Assembly (Not Shown) ---Replaces 50695 NOTE: 195077 Rotor requires 195056 Drive Sheave (Refer to Page 22)
6	163641	++ 2	+ 2		Bearing ---Replaces 47559
	66497	+ 2	++ 2	2	Bearing
7	47067	++ 2	+ 2		Collar
	45393	+ 2	++ 2		Collar
8	48222	++ 4	+ 4		Bearing Flange 6 88011 Cap Screw, Hex Head, Grade 5, 3/8" x 1 1/4" 12 285072 Special Washer 6 87861 Hex Nut, Heavy, 3/8"
	52481	+ 4	+++ 4		Bearing Flange 8 87689 Cap Screw, Hex Head, Grade 5, 1/2" x 1 1/2" 16 65319 Special Washer 8 84946 Hex Nut, 1/2"
9	63646	+++ 1		1	Shield
10	63647	+++ 2		2	Bearing Housing 2 87569 Lube Fitting, 1/4-28, 45° 8 87689 Cap Screw, Hex Head, Grade 5, 1/2" x 1 1/2" 16 65319 Special Washer 8 84946 Hex Nut, 1/2"

MODEL 31 CROP SHREDDER
 MODELS 33 AND 36 CROP CHOPPERS
 ROTOR GROUP (CONTINUED)

Ref. No.	Part No.	No. Used			Description
		31	33	36	
11	† 49973 56237	1			Sprocket, 13 Teeth for RC #2040
			1		Sprocket, 16 Teeth for RC #2040 1 84304 Woodruff Key, #16 3/16" x 1 1/8" 1 80732 Cotter Pin, 1/4" x 3"
	†† 46753	1			Sprocket Weld Assembly, 15 Teeth for RC #50 1 84304 Woodruff Key, #16, 3/16" x 1 1/8" 1 87718 Roll Pin, 1/4" x 2"
12	† 49968 56364	1			Auger Drive Chain, Front, RC #2040, 39 Total Pitches
			1		Auger Drive Chain, Front, RC #2040, 40 Total Pitches AR 25809 Regular Link AR 25813 Connector Link AR 25818 Offset Link
	†† 46764	1			Auger Drive Chain, Front, RC##50. 58 Total Pitches AR 25805 Regular Link AR 25194 Coupler Link AR 25816 Offset Link
13	† 49967 †† 46894	1	1		Shaft and Support Weld Assembly (2 3/4" Long Shaft)
			1		Shaft and Support Weld Assembly (3 1/4" Long Shaft)
				††† 87414 Lube Fitting, 1/4-28	
				† 87686 Bolt, Round Head, Short Square Neck, 3/8" x 1"	
				†† 88865 Bolt, Round Head, Short Square Neck, 3/8" x 1 1/4" 4 80680 Lockwasher, 3/8" 4 84944 Hex Nut, 3/8"	
14	†† 46891	1			Support
15	† 27965	1	1		Drilled Cap Screw
					1 87415 Lube Fitting, 1/4-28, 90° 1 80679 Lockwasher, 1/2"
16	† 25939	1	1		Special Washer
17	27696	AR	AR		Washer
18	† 56014 †† 46901	1	1		Idler Sprocket Assembly for RC #2040 (Includes Ref. 19 and 20)
			1		Idler Sprocket Assembly for RC #50 (Includes Ref. 19 and 20)
19	36310	2	2		Oil Seal
20	46889	2	2		Needle Bearing
21	46734	1	1	1	Chain Cover
					5 87639 Bolt, Round Head Short Square Neck, 5/16" x 3/4"
					5 80681 Lockwasher, 5/16"
					5 84943 Hex Nut, 5/16"
22	46735	1	1	1	Side Plate Weld Assembly
					6 88542 Cap Screw, Hex Head, 1/4" x 1/2"
					6 80682 Lockwasher, 1/4"
23	141781			1	Washer
24	# 46711		64		Clip Bracket (Used with 46767 Rotor)
25	# 49928	32	32	40	Clip Bracket Weld Assembly (Used with 52092 and 195077 Rotors)

AR - As Required

#NOTE: When replacing either 46711 or 49928 be sure to maintain proper balance of the Rotor Weld Assembly

* Used on or above Serial No. 5792 on Model 33

** Used on or below Serial No. 5791 on Model 33

*** When replacing 52092 Rotor on Model 31 below Serial No. 1120 or on Model 33 between Serial No's 5791 and 8848, also order 1 of 52338 Splined Hub.

+ Used on or below Serial No. 1120 on Model 31, below 9300 on Model 33

++ Used on or above Serial No. 1121 on Model 31, above 9301 on Model 33

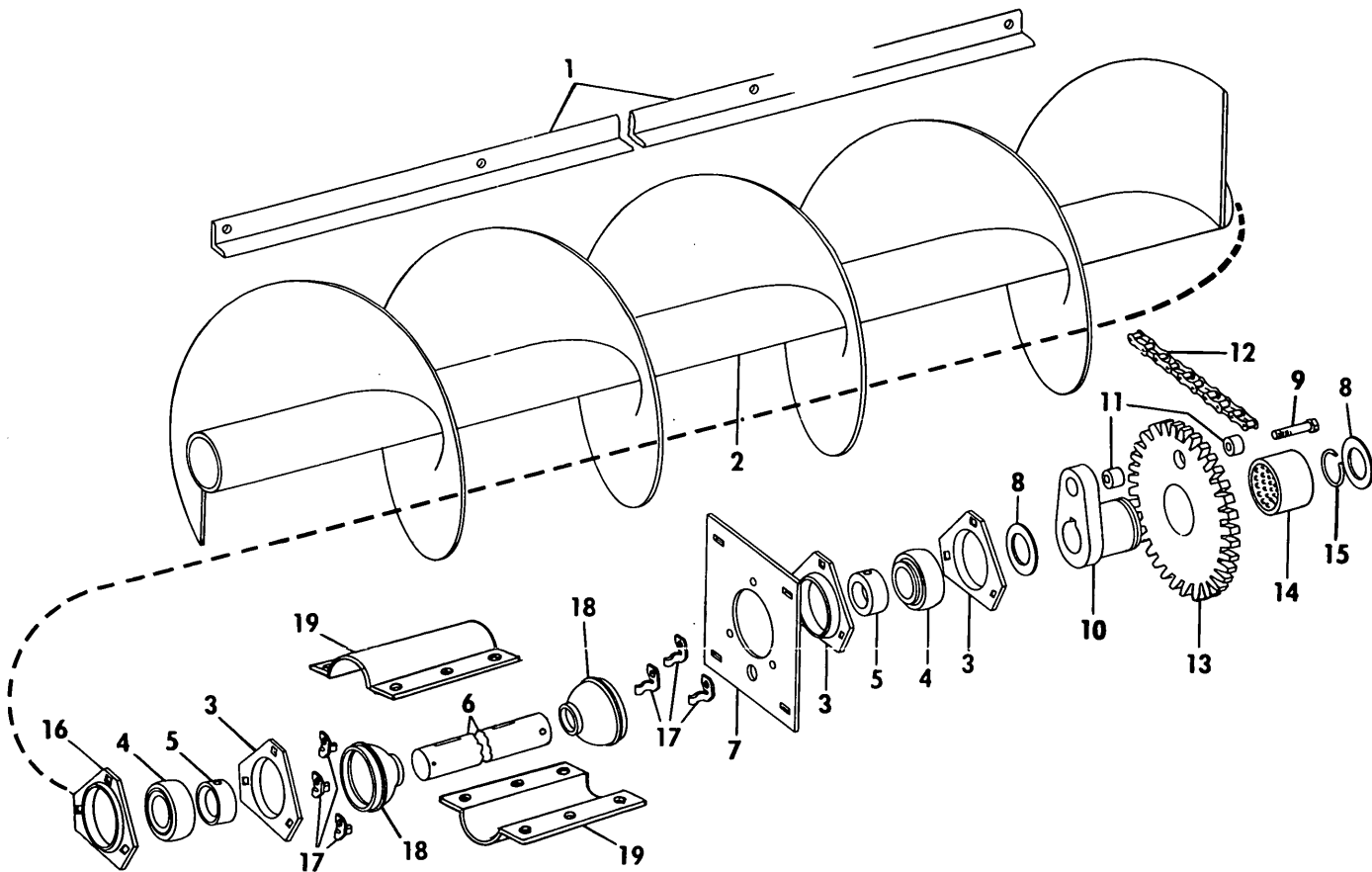
+++ Used on or above Serial No. 10592 on Model 33

++++ Used between Serial No's 9301 and 10591 on Model 33

† Used on or above Serial No. 8585 on Model 33, used on all Model 36

†† Used on or below Serial No. 8584 on Model 33, not used on Model 36

MODEL 33 AND 36 CROP CHOPPER
AUGER GROUP



Ref. No.	Part No.	No. Used 33 36	Description
1	46815	1	Auger Housing Support 6 88206 Cap Screw, Hex Head, 3/8" x 1" 1 87259 Machine Screw, Truss Head 3/8" x 1" 7 80702 Plain Washer 3/8" 7 80680 Lockwasher, 3/8" 7 84944 Hex Nut, 3/8"
	50690	1	Auger Housing Support 6 88206 Cap Screw, Hex Head, 3/8" x 1" 1 87259 Machine Screw, Truss Head, 3/8" x 1" 7 80702 Plain Washer, 3/8" 7 80680 Lockwasher, 3/8" 7 84944 Hex Nut, 3/8"
2	46738	§1	Auger Weld Assembly
	50674	§1	Auger Weld Assembly 1 87339 Cap Screw, Hex Head, 1/2" x 3" 1 80679 Lockwasher, 1/2" 1 84946 Hex Nut, 1/2" 1 84361 Woodruff Key, #21 - 1/4" x 1 1/4" or if used with former Auger Drive Shaft use 1-80768 Woodruff Key #15 - 1/4" x 1"
	67545	§§1	Auger Weld Assembly
	67544	§§1	Auger Weld Assembly 1 84361 Woodruff Key #21, 1/4" x 1 1/4" 1 87399 Cotter Pin, 3/16" x 1 3/4"

CONTINUE

MODEL 33 AND 36 CROP CHOPPER

AUGER GROUP (CONTINUED)

Ref. No.	Part No.	No. Used		Description
		33	36	
3	43048	3	3	Flangette 3 84867 Carriage Bolt, 3/8" x 3/4" 3 88206 Cap Screw, Hex Head, 3/8" x 1" 6 80680 Lockwasher, 3/8" 6 84944 Hex Nut, 3/8"
4	38766	2	2	Bearing
5	38767	2	2	Collar 2 80429 Set Screw, Hex Socket Head, Cup Point, 5/16" x 5/16"
6	56016	§1	§1	Auger Drive Shaft 1 80736 Cotter Pin, 3/16" x 1 3/4"
7	46754	1	1	Side Plate 4 84867 Carriage Bolt, 3/8" x 3/4" 4 80702 Plain Washer, 3/8" 4 80680 Lockwasher, 3/8" 4 84944 Hex Nut, 3/8"
8	27696	AR	AR	Washer
9	88506	1	1	Cap Screw, Hex Head, 1/4" x 1 3/4" 1 80682 Lockwasher, 1/4" 1 84942 Hex Nut, 1/4"
10	46853	1	1	Hub and Sleeve Assembly 1 84361 Woodruff Key - #21, 1/4" x 1 1/4" or if used with former Auger Drive Shaft 1 - 80768 Woodruff Key #15, 1/4" x 1"
11	46522	2	2	Sleeve
12	49968	*1		Auger Drive Chain, RC 2040, 39 Total Pitches AR 25809 Roller Link, RC #2040 AR 25813 Coupler Link, RC #2040 AR 25818 Offset Link, RC #2040
	46763	**1		Auger Drive Chain, RC 50, 56 Total Pitches AR 25805 Roller Link, RC #50 AR 25194 Coupler Link, RC #50 AR 25816 Offset Link
	56364		1	Auger Drive Chain, RC 2040, 40 Total Pitches AR 25809 Roller Link, RC #2040 AR 25813 Coupler Link, RC #2040 AR 25818 Offset Link
13	46961	**1		Auger Sprocket w/Bushing 1 87569 Lube Fitting, 1/4", 45°
	49971	*1	1	Auger Sprocket w/Bushing 1 87415 Lube Fitting, 1/4", 90°
14	46962	1	1	Bushing
15	37185	1	1	Retaining Ring
16	245743	1	1	Shield and Bearing Support ---Replaces 46913
17	48205	6	6	Clip
18	65717	2	2	Shroud 2 87414 Lube Fitting, 1/4", Straight
19	65716	2	2	Guard 6 84467 Machine Screw, Truss Head, 1/4" x 1/2" 6 80682 Plain Washer, 1/4" 6 84942 Hex Nut, 1/4"

*Used on and above serial no. 8585.

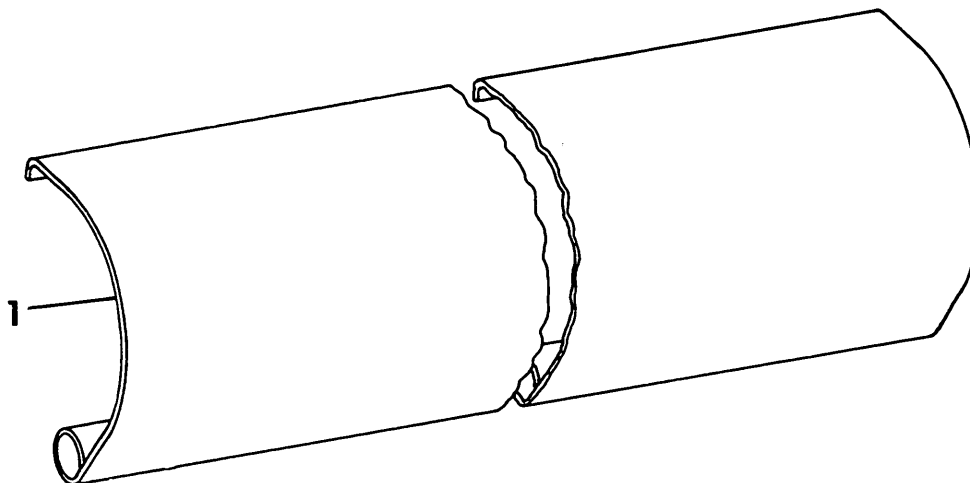
**Used on and below serial no. 8584.

AR - As Required

§Used on and below serial no. 11799 on Model 33,
and on and below serial no. 3199 on Model 36.

§§Used on and above serial no. 11800 on Model 33,
and on and above serial no. 3200 on Model 36.

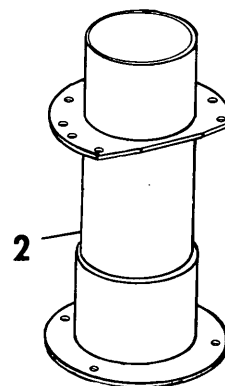
**ATTACHMENTS
PUSH BAR KIT**



Ref. No.	Part No.	No. Used	Description
1	74061		PUSH BAR KIT FOR MODEL 33 CROP CHOPPER 6 87101 Machine Screw, Truss Head, 3/8" x 3/4" 6 80702 Plain Washer, 3/8" 6 80680 Lockwasher, 3/8" 6 84944 Hex Nut, 3/8"
	74149		PUSH BAR KIT FOR MODEL 36 CROP CHOPPER 4 87101 Machine Screw, Truss Head, 3/8" x 3/4" 4 80680 Lockwasher, 3/8" 4 84944 Hex Nut 3/8"

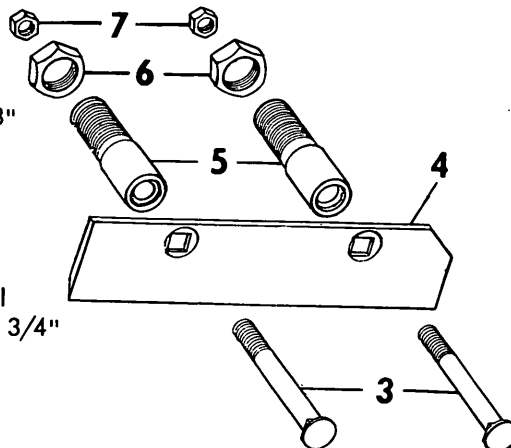
SPOUT EXTENSION BUNDLE

Ref. No.	Part No.	No. Used	Description
2	83375	1	SPOUT EXTENSION BUNDLE 4 88011 Cap Screw, Hex Head, 3/8" x 1 1/4" 4 80680 Lockwasher, 3/8" 4 84944 Hex Nut 3/8"

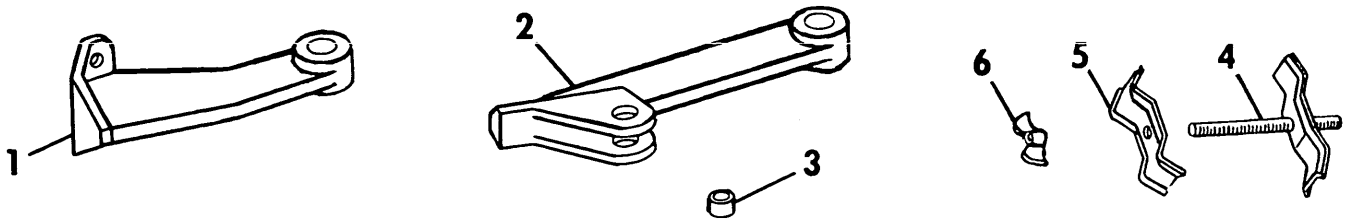


**MODEL 33 AND 36 CROP CHOPPER
SIX KNIFE FLYWHEEL CONVERSION KIT**

Ref. No.	Part No.	No. Used	Description
	70913	1	6 KNIFE FLYWHEEL KIT
3	48688	6	Plow Bolt, 3/4" x 6 3/8"
4	46811	3	Knife
5	46833	6	Knife Support
6	87604	12	Hex Jam Nut, 1 1/2" - 12 NF
7	84948	6	Hex Jam Nut, 3/4" 6 87880 Flat Internal Tooth Lockwasher, 3/4"

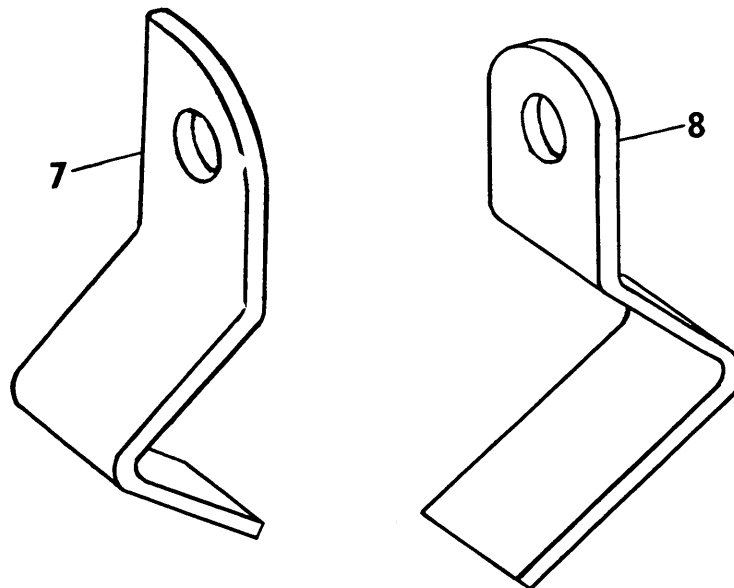


**ATTACHMENTS
HYDRAULIC LIFT BUNDLE**



Ref. No.	Part No.	No. Used	Description
1	83373 47180	1	Hydraulic Lift Bundle Bracket, Cylinder Support
2	88551	2	Cap Screw, Hex Head, 1/2" x 1 3/4"
	80679	2	Lockwasher, 1/2"
	84946	2	Hex Nut, 1/2"
2	47170	1	Lift Arm
3	47179	1	Split Spacer
	88555	1	Cap Screw, Hex Head, 5/8" x 2"
	84057	1	Lockwasher, 5/8"
	84947	1	Hex Nut 5/8"
4	42369	1	Clamp Weld Assembly
	80680	1	Lockwasher, 3/8"
	84944	1	Hex Nut, 3/8"
5	42365	1	Clamp
6	80840	1	Wing Nut, 3/8"

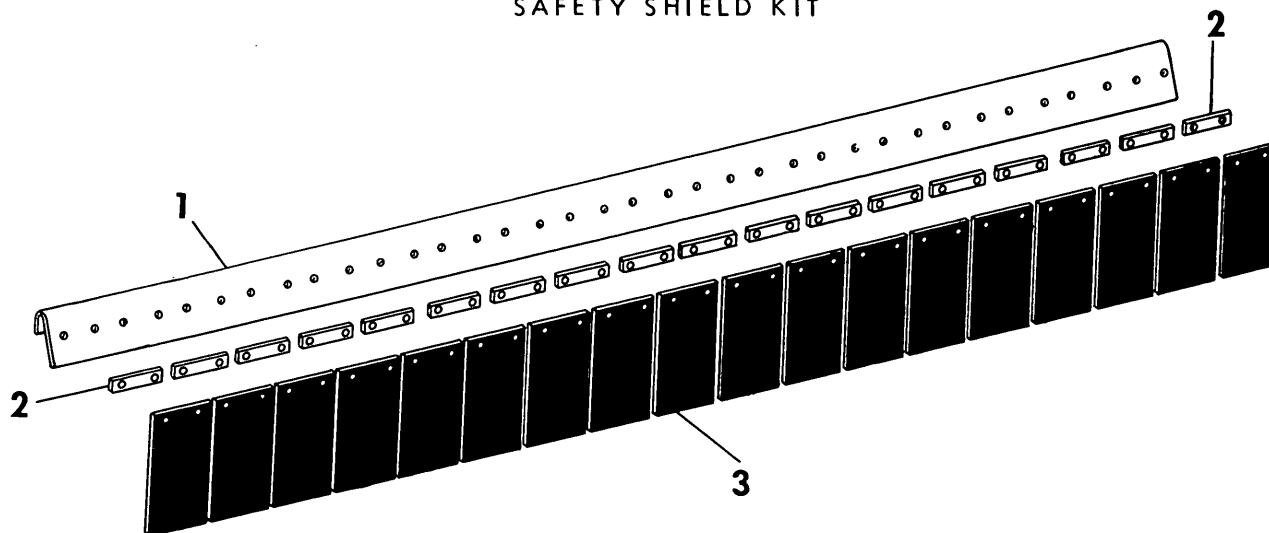
SHORT FLAIL KITS



Ref. No.	Part No.	No. Used	Description
7	* 70909	2	Short Flail Kit, L.H. (Consists of 4 pieces of 46920)
7A	* 70910	6	Short Flail Kit, R.H. (Consists of 4 pieces of 46919)
8	49946	AR	Short Flail, Reversible (Suggested installation quantity - 4)

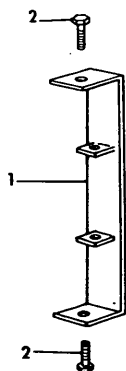
* Used only on Model 33 on or below Serial No. 5791, no longer available.

MODEL 33 AND 36 CROP CHOPPER
SAFETY SHIELD KIT



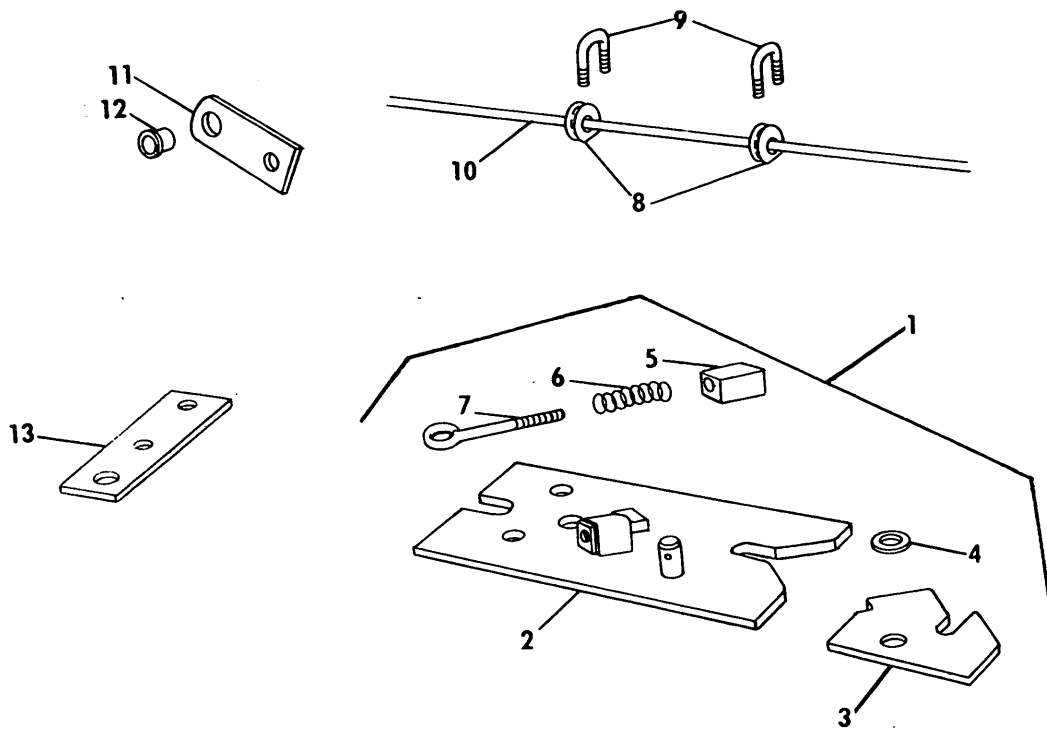
Ref. No.	Part No.	No. Used		Description
		33	36	
1	70997	1		Safety Shield Kit
	74148		1	Safety Shield Kit
	48213	1		Channel Weld Assembly
				2 87280 Cap Screw, Hex Head, 3/8" x 5/8"
				1 87285 Cap Screw, Hex Head, 3/8" x 7/8"
			3 80680 Lockwasher, 3/8"	
	50672		1	Channel Weld Assembly
				4 87280 Cap Screw, Hex Head, 3/8" x 5/8"
				4 80680 Lockwasher, 3/8"
2	48210	18	22	Back-Up Plate
3	48214	18	22	Flap
	87908	36	44	Rivet, Flat Head, 3/16" x 3/4" (Not Illustrated)

DEFLECTOR KIT



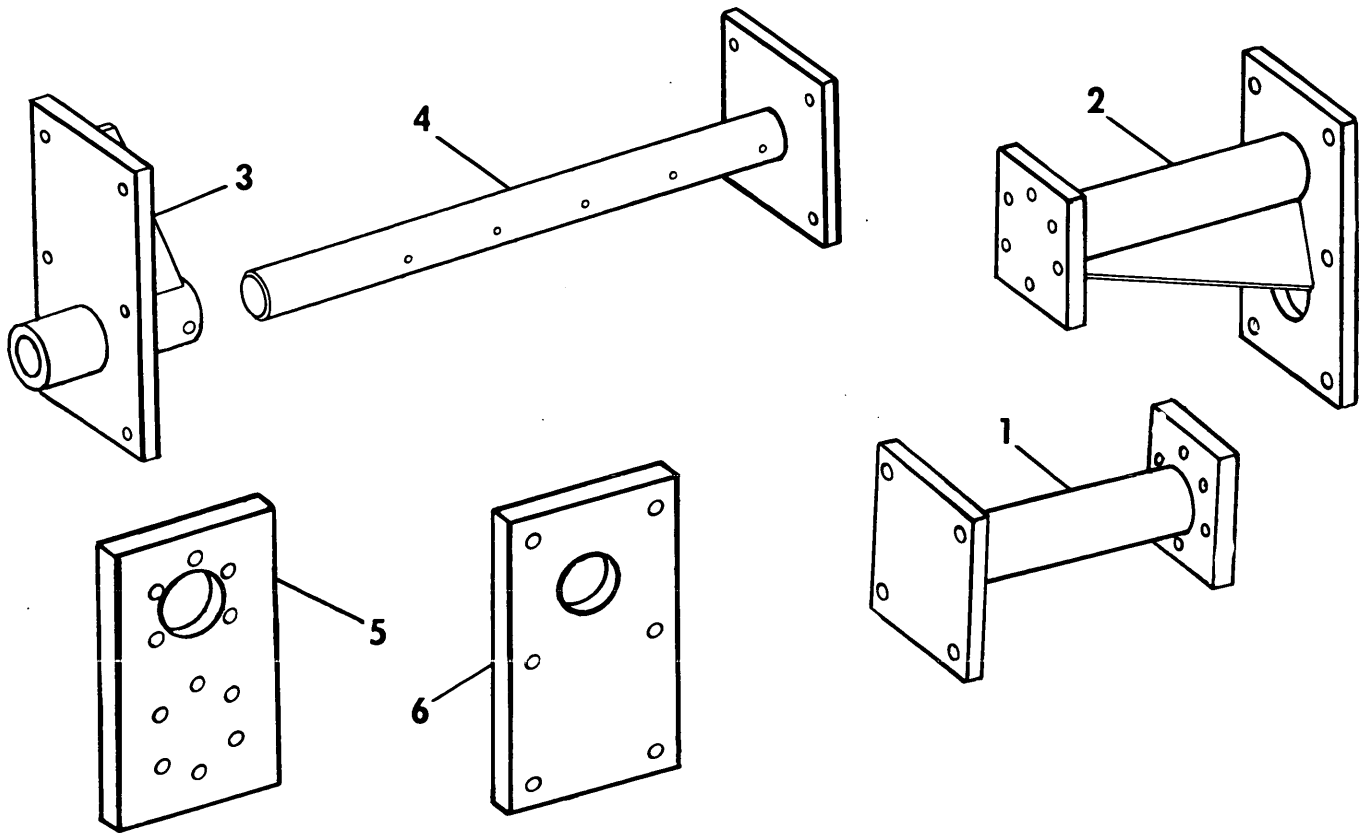
Ref. No.	Part No.	No. Used		Description
		33	36	
1	171561	3		Deflector Weld Assembly
2	88346		6	Hex Head, Cap Screw, 5/16" x 2 1/2"
				6 87382 Hex Lock Nut, 5/16"

MODEL 33 AND 36 CROP CHOPPER
AUTOMATIC HITCH KIT



Ref. No.	Part No.	No. Used	Description
1	201585	1	Automatic Hitch Kit
	218409	1	Automatic Hitch Assembly ---Replaces 163063 (Includes Ref. 2 thru 7)
			2 88551 Cap Screw, Hex Head, Grade 5, 1/2" x 1 3/4"
			1 88693 Cap Screw, Hex Head, Grade 5, 5/8" x 2 3/4"
			1 87337 Cap Screw, Hex Head, Grade 5, 3/4" x 3"
			2 80700 Washer, 1/2"
			1 80299 Washer, 5/8"
			1 84239 Washer, 3/4"
			2 84236 Locknut, 1/2"
			1 88718 Locknut, 5/8" Grade B
			1 84041 Locknut, 3/4"
2	213736	1	Hitch Weld Assembly
3	213744	1	Plate
			1 87395 Cotter Pin, 1/8" x 1 1/4"
4	26301	1	Washer
5	213737	1	Block
6	37193	1	Spring
7	25667	1	Eyebolt
			2 84969 Jam Nut, 3/8"
8	28110	2	Rope Guide
9	28114	2	"U" Bolt
			4 87771 Lockwasher, 3/16"
			4 87304 Hex Nut, 3/16"
10	248325	1	Rope, 21' ---Replaces 43240
11	137413	2	Bracket and Grommet Assembly
			2 88206 Cap Screw, Hex Head, 3/8" x 1"
			2 80680 Lockwasher, 3/8"
			2 84944 Hex Nut, 3/8"
12	00709	2	Grommet
13	136697	1	Strip

AXLE EXTENSION AND ADJUSTABLE HEIGHT KITS



Ref. No.	Part No.	No. Used	Description
1	70898 47402	1	Axle Extension Kit R.H. (Includes Ref. 1 and 2) Inboard Extension Weld Assembly 4 88551 Cap Screw, Hex Head, Grade 5 1/2" x 1 3/4" 4 80679 Lockwasher, 1/2" 4 84946 Hex Nut, 1/2"
2	47403	1	Outboard Extension Weld Assembly 6 88428 Cap Screw, Hex Head, Grade 5, 3/8" x 1 3/4" 6 80680 Lockwasher 3/8" 6 84944 Hex Nut, 3/8"
3	70918 47401	1	Axle Extension Kit, L.H. (Includes Ref. 3 and 4) Support Weld Assembly 4 88551 Cap Screw, Hex Head, Grade 5 1/2" x 1 3/4" 4 80679 Lockwasher, 1/2" 4 84946 Hex Nut, 1/2"
4	47404	1	Extension Shaft Weld Assembly 1 87626 Cap Screw Hex Head, Grade 5, 5/16" x 2 3/4" 1 84943 Hex Nut, 5/16"
5	70897 47394	1	Adjustable Axle Height Kit (Includes Ref. 5 and 6) Spacer 5 88436 Cap Screw, Hex Head, Grade 5 3/8" x 2" 5 80680 Lockwasher, 3/8" 5 84944 Hex Nut, 3/8"
6	47396	2	Plate 4 87975 Cap Screw, Hex Head, Grade 5, 1/2" x 2 1/4" 4 80679 Lockwasher, 1/2" 4 84946 Hex Nut, 1/2"

NUMERICAL PARTS INDEX

Part No.	Ref. No.	Page No.	Part No.	Ref. No.	Page No.	Part No.	Ref. No.	Page No.	Part No.	Ref. No.	Page No.
00709	12	43	35720	12	31	45876	12	25	46767	5	36
10013	33	22	35785	3	30	45882	11	25	46774	16	5
15081	11	31	36042	1	30	45950	5	5	46778	8	9
25194	12	37	36276	13	17	46522	11	39		24	15
	12	39	36310	19	37	46655	24	13	46779	9	9
25457	36	22	36313	7	31	46657	6	11		25	15
25461	12	31	36383	24	19	46658	7	11	46781	22	25
25464	11	11	36425	22	13	46661	25	13	46782	1	14
25667	7	43	36433	28	22	46663	31	13	46789	8	17
25805	12	37	36434	29	22	46664	12	27		19	19
	12	39	36436	21	13	46669	30	13		13	21
25809	12	37	36464	2	5	46670	15	11	46790	20	15
	12	39	36658	14	11	46674	13	34	46791	10	17
25813	12	37	36723	24	5	46675	17	11		21	19
	12	39	36724	19	5	46678	6	9		15A	21
25816	12	37	36725	20	5	46679	5	9	46792	6	14
	12	39	36726	25	5	46680	4	9	46803	2	14
25818	12	37	36727	26	5	46681	29	6	46805	8	15
	12	39	36835	19	17	46684	9	9	46807	4	14
25936	23	13		28	19		25	15	46808	9A	15
25939	16	37		34	22	46685	33	13	46809	16	15
26301	4	43		23	34	46686	8	9	46810	18	15
26372	6	30	37185	15	39		24	15		12	17
26392	35	6	37193	6	43	46687	9	11	46811	16	25
26538	7	7	37251	27	13	46688	10	11		4	40
26981	5	13	37326	19	15	46689	2	9	46815	1	38
27531	19	31	37347	17	17	46695	2	11	46818	8	33
27696	17	37		25	19	46699	4	11	46819	7	33
	8	39	37851	8	5	46708	10	34	46826	17	19
27697	11	19	38027	7	9	46710	3	36		11	21
27953	34	22	38231	15	27	46711	24	37	46830	16	11
27965	15	37	38233	3	17	46717	1	19	46833	18	25
28110	29	13	38283	14	27	46718	8A	25		5	40
	8	43	38766	11	25	46722	21	15	46836	6	25
28114	28	13		4	39	46724	5	11	46841	10	19
	9	43	38767	12	25	46725	3	19	46842	7	15
29141	13	25		5	39	46726	4	19	46843	17	15
29212	15	13	39122	11	29	46727	5	19	46850	11	34
29214	7	13	39374	16	21	46730	26	15	46853	10	39
29852	18	13	39538	17	5	46732	14	15	46871	31	6
32307	7	21	39550	17A	5	46734	21	37	46876	27	5
32383	17	5	39551	17B	5	46735	22	37	46886	5	14
33114	7	29	40305	3	13	46738	2	38		4	17
33306	9	5	42352	11	5	46741	2	26		14	19
33778	14	5	42365	5	41	46743	23	19	46889	20	37
33781	4	30	42369	4	41	46744	9	19	46891	14	37
34418	16	13	42384	7	5	46745	12	19	46894	13	37
34455	38	6	42385	4	5	46747	12	11	46901	18	37
	14	29	43048	10	25	46751	26	13	46912	2A	25
34490	20	17		3	39	46753	11	37	46914	14	17
	27	19	43414	32	22	46754	7	39		22	19
	33	22	44322	20	13	46756	6	33		19	21
34780	2	13	45217	10	17	46760	3	33	46915	1	36
35476	2	30		21	19	46761	1	33	46916	2	36
35544	5	29		15A	21	46763	12	39	46919	7A	41
35717	11	31	45393	7	36	46764	12	37	46920	7	41
35718	18	31	45631	3B	25	46765	8	11	46921	1	26

CONTINUE

NUMERICAL PARTS INDEX (CONTINUED)

Part No.	Ref. No.	Page No.	Part No.	Ref. No.	Page No.	Part No.	Ref. No.	Page No.	Part No.	Ref. No.	Page No.
46922	12	15	47941	10	13	50690	1	38	63646	9	36
46923		14	48027	13	27	50780	9	33	63647	10	36
46924	11	27	48036	16	17	52024	18	17	63648	27	22
46927	12	29		24	19		26	19	64218	14	17
46932	20	15		21	21		23	21		19	21
46933	20	15	48205	15	25	52090	34	35	64552	10	31
46934	6	19		17	39	52092	5	36	64974	21	17
46941	3	29	48206	32	13	52338	22	17		29	19
46949	3	9	48207	34	13		30	19		37	22
46950	2	29	48210	2	42		38	22	65319	10	36
46952	3	5	48213	1	42	52412		6	65694	3	26
46953	4	33	48214	3	42	52481	8	36	65696	19	25
46961	13	39	48221	1A	25	56014	18	37	65716	19	39
46962	14	39	48222	8	36	56016	6	39	65717	18	39
46966	8	29	48645	20	25	56211	4	9	65918	4A	11
46967	4	29	48688	17	25	56212	19	21	66271	21	25
46970	10	29		3	40	56213	19	21	66497	6	36
46971	6	29	48689	21	25	56235	16	11	66961	20	25
46972	14	29	48921	30	22	56236	18	21	67544	2	38
46973	13	29	49063	9	9	56237	11	37	67545	2	38
46984	1	9		25	15	56238	37	22	67553	11	34
47027	12	34	49064	9	9	56240	25	21	70841	6	5
47031	25	31		25	15	56323	7A	15	70897		44
47032	9	27	49065	8	9	56331	19	34	70898		44
	28	31		24	15	56364	12	37	70909	7	41
47036	10	9	49066	8	9		12	39	70910	7A	41
47040	5	26		24	15	56382		6	70913		40
47054	14	34	49070	10	27	56389	1	17	70918		44
47059	4	26	49071	27	31		18	21	70997		42
47063	7	27	49102	1A	30	56496	26	15	72871	15	5
47064	8	27	49928	25	37	56501	10	17	74061	1	40
47065	16	27	49929	29	35		15	21	74148		42
47067	7	36	49932	11	17	56760	9B	13	74149	1	40
47084	5	33	49934	5	17	56801	9	13	83373		41
47090	17	27	49939	33	35	56832	31	22	83375		40
47111	7	25	49943	16	11	58061	1	29	103060	26	21
47142	2	33	49945	2	36	58067	1	25	110310	17	34
47170	2	41	49946	8	41	58068	15	19	110660	23	31
47173	18	34	49950	28	35		17	21	110680	22	31
47179	3	41	49951	30	35	58072	13	27	115040	1	11
47180	1	41	49954	32	35	58101	3A	25	115680	33A	6
47192	19	13	49955	31	35	58104	5	25	121435	17	31
	15	15	49956	33	6	58105	4	25	121468	1	29
47221	16	34	49961	27	35	58106	25	19	121469	16	31
47225	2	19	49963	6	17		22	21	121472	14	31
47287	21	31	49967	13	37	58109	3	9	122406	13	5
47298	3A	25	49968	12	37	58131	15	17	122483	1	7
47394	5	44		12	39		23	19	126162	39	6
47396	6	44	49971	13	39		20	21	126323	1	5
47401	3	44	49973	11	37	58166	6	27	126760	3	21
47402	1	44	50256	28	5	59741	10	17	127434	4	21
47403	2	44	50600	9	7		15	21	128375	6	7
47404	4	44	50672	1	42	59911	34	6	128437	12	5
47498		6	50674	2	38	63048	2	17			7
47568	20	34	50677	9	33	63553	13	11	128952	13	31
47575	26	31	50680	14	34	63556	3	11	129344	13	7
47632	20	31	50685	1	9	63643	3A	5	129345	14	7

NUMERICAL PARTS INDEX (CONTINUED)

Part No.	Ref. No.	Page No.	Part No.	Ref. No.	Page No.	Part No.	Ref. No.	Page No.	Part No.	Ref. No.	Page No.
129757	5	30	163902	5	7	179914	13	15	218784	8	7
129758	8	31	165166	36	6	181110		14	236068	4	13
129760	3A	30	166341	2	21	183013	9	29	245087	+	1
129834	15	31	166342	5	21	189759	12	9			8
130358	4	36	166376	3	14	195036	11	9			18
130362	3B	5	166945	3B	5	195056	37	22	245743	+	9
132158	21	5	167053	4	36	195077	5	36			16
134464	3A	9	169666	37	6	196033	+	17	249127	+	14
134489	32	6	169700	2	7	197667		16	249130	+	18
134493	2	25	169702	12	7			10	249154	-	15
134494	8	25	171561	1	42	198219	12A	13	265059	-	3B
134835	30	6	175480	12	13	201585		43	285072	+	8
134836	7	25	175482	11	13	213736	2	43	285148	-	30
134837	1A	5	175483	1	13	213737	5	43	285267	-	1A
136697	13	43	175485	14	13	213744	3	43	285294	-	29
137413	11	43	175487	8	13	216110	+	17A	285297	-	1
138539	34	22	178297	25	21	217229	+	17	285298	-	2
141781	9	15	178299	28	22	217391		4	285299	-	10
	23	37	179034	35	22	217392	3	7	285300	-	14
143905	25	21	179035	24	21	218409	1	43	285301	+	21
144179	6	21	179760	3	25	218527	7	17	285302	-	21
163641	6	36	179908	6A	15			18	285315	-	34A
								12			21

SPEERY  NEW HOLLAND